



2016-17 UTEP BASKETBALL GAME NOTES

MINERS VS MARYLAND EASTERN SHORE / DEC. 21, 2016 / DON HASKINS CENTER

PROJECTED STARTERS (BASED ON PREVIOUS GAME)



41 MATT WILLMS
JUNIOR CENTER
7-1, 235
10.6 PPG / 5.2 RPG / 0.9 APG
.609 FG% / .531 FT%



54 KELVIN JONES
FRESHMAN CENTER
6-11, 230
4.1 PPG / 3.7 RPG / 0.3 APG
.515 FG% / .273 FT%



11 JAKE FLAGGERT
JUNIOR FORWARD
6-7, 220
6.8 PPG / 2.6 RPG / 1.1 APG
.419 FG% / 1.000 FT%



2 OMEGA HARRIS
JUNIOR GUARD
6-3, 165
17.5 PPG / 2.4 RPG / 1.6 APG
.480 FG% / .844 FT%



15 DOMINIC ARTIS
SENIOR GUARD
6-3, 190
14.8 PPG / 6.3 RPG / 8.4 APG
.414 FG% / .608 FT%



OPENING TIP

- UTEP (2-7) participates in the 55th Annual WestStar Bank Don Haskins Sun Bowl Invitational on Wednesday and Thursday (Dec. 21-22) in the Haskins Center.
- Wednesday's matchups are Akron versus UC Irvine at 5 p.m., and UTEP versus Maryland Eastern Shore at 7 p.m. The consolation game is at 5 on Thursday, with the championship to follow at 7.
- This year's field features two teams that won conference championships and set school records for wins a year ago in Akron and UC Irvine, the latter of which is the defending tournament champion.
- UTEP has posted an all-time record of 84-24 in the Sun Bowl Invitational. The Miners have won titles on 31 occasions and played in the championship game 43 times (there was no championship game in 2010). The event originated in 1961 as the Sun Carnival Basketball Tournament and took **Don Haskins'** name in 2009.

SUN BOWL INVITATIONAL EXPERIENCE

- Six players on the UTEP roster have played in the Sun Bowl Invitational -- **Dominic Artis** (two games), **Jake Flaggert** (four games), **Omega Harris** (four games), **Paul Thomas** (two games), **Trey Touchet** (two games) and **Matt Willms** (four games).
- Artis averaged 15.5 points, 8.5 rebounds and 4.5 assists in last year's tourney, making 4-of-8

GAME DETAIL

Arena: Don Haskins Center (12,000)
Time: 7 p.m. MT
TV: None
English Radio: KOFX 92.3 FM (English) (Jon Teicher, Steve Yellen)
Spanish Radio: ESPN Deportes 1650 AM (Omar Ropele, Abel Rodriguez)
Series: UTEP leads 1-0

three pointers (.500) and 9-of-11 free throws (.818).

- Harris has averaged 12.5 ppg in the tournament with a .462 (12-for-26) three-point field goal percentage.
- Willms has made 9-of-13 shots (.692) in the Sun Bowl Invitational, averaging 6.8 points.
- UTEP is 22-7 in the Sun Bowl Invitational with **Tim Floyd** on the bench (11-5 as an assistant coach, 10-2 as head coach).

ABOUT MARYLAND EASTERN SHORE

- The Hawks dropped their fourth consecutive game, falling to 1-11 on the season with a 61-58 loss at American on Monday.
- Maryland Eastern Shore has played the 50th-toughest schedule in the country. The Hawks have already faced Boston College, Wichita State, Colorado State, LA Tech, Virginia Tech, UCF and Michigan.
- The Hawks are 0-10 on the road.
- Junior guard Ryan Andino averages 13.7 ppg to pace Maryland Eastern Shore. Senior forward Bakari Copeland averages 13.4 ppg.
- Andino is seventh in the nation in three-pointers made (46) and attempted (107), and eighth in three-point field goals per game (3.8).
- Sophomore guard Dontae Caldwell is a former AAU teammate of UTEP freshman guard **Chris Barnes**. Caldwell is from Santa Ana, Calif. and Barnes hails from Compton.
- The Hawks are shooting 39.8 percent from the field, 33.8 percent from three-point range and 67.4 percent from the line, averaging 65.3 points.
- Maryland Eastern Shore has given up 80 points per game with a .486 defensive field goal percentage and .401 defensive three-point percentage.

2016-17 SCHEDULE

Date	Opponent	Score
Nov. 12	Louisiana College	W 88-54
Nov. 17	vs. Wake Forest%	L 81-103
Nov. 18	vs. Western Michigan%	W 85-75
Nov. 20	vs. Mississippi State%	L 54-61
Nov. 23	Southeastern Louisiana	L 56-72
Dec. 3	Northwestern State	L 67-79
Dec. 7	at New Mexico	L 77-78
Dec. 13	NM State	L 68-79
Dec. 17	Northern Arizona	L 74-76
Dec. 21	Maryland Eastern Shore+	7 p.m.
Dec. 22	Akron/UC Irvine+	TBA
Dec. 30	at NM State	7 p.m.
Jan. 1	at UTSA*	2 p.m.
Jan. 5	at LA Tech*	5:30 p.m.
Jan. 7	at Southern Miss*	3 p.m.
Jan. 12	FIU*	7 p.m.
Jan. 14	Florida Atlantic*	7 p.m.
Jan. 21	UTSA*	7 p.m.
Jan. 26	at WKU*	6 p.m.
Jan. 28	at Marshall*	5 p.m.
Feb. 2	UAB*	8 p.m.
Feb. 4	Middle Tennessee*	6 p.m.
Feb. 9	LA Tech*	7 p.m.
Feb. 11	Southern Miss*	7 p.m.
Feb. 16	at North Texas*	6 p.m.
Feb. 18	at Rice*	6 p.m.
Feb. 23	at Florida Atlantic*	5 p.m.
Feb. 25	at FIU*	5 p.m.
March 2	Old Dominion*	6 p.m.
March 4	Charlotte*	1 p.m.
March 8-11	vs. TBD#	TBD

Home games in bold
 % Gildan Charleston Classic (Charleston, S.C.)
 + WestStar Bank Don Haskins Sun Bowl Invitational
 * Conference USA game
 # Conference USA Championships (Birmingham, Ala.)
 All times Mountain

WHO WE ARE ...



Please refer to us as UTEP. We are not the University of Texas at El Paso, UT-El Paso or Texas-El Paso.

MEDIA INFORMATION

UTEP Men's Basketball SID

Jeff Darby
 e-mail: jdarby@utep.edu
 Office: (915) 747-6652
 Cell: (915) 204-0642

UTEP Athletics Website

www.utepathletics.com

Conference USA Website

www.conferenceusa.com

Practice Coverage

UTEP basketball practices are closed to the media. Coach Tim Floyd and players will be available for interviews before practice. Television crews are permitted to shoot the team's warmup prior to practice. Please contact Jeff Darby ahead of time for the status of practice and for clearance into practice.

Postgame Interview Policy

UTEP's locker room is open. Head Coach Tim Floyd will be available following the game in the team room (caddy corner to the visiting locker room) for home games or, for road games, in a location designated by the host institution.

Tim Floyd Radio and TV Show

2016-17 Schedule

(all shows from 7-8 p.m. on KOFX 92.3 FM)

Border City Ale House is located at 1506 North Lee Trevino. Ray's Backyard at Pershing Inn is located at 2909 Pershing Drive.

Thursday, Dec. 29	Border City Ale House
Wednesday, Jan. 11	Pershing Inn
Thursday, Jan. 19	Border City Ale House
Monday, Jan. 23	Pershing Inn
Wednesday, Feb. 1	Border City Ale House
Wednesday, Feb. 8	Pershing Inn
Monday, Feb. 13	Border City Ale House
Monday, Feb. 20	Pershing Inn
Wednesday, March 1	Border City Ale House
Sunday, March 5*	Pershing Inn

* Subject to change

STATISTICAL COMPARISON



MINERS
(2-7, 0-0 C-USA)



HAWKS
(1-11, 0-0 MEAC)

	Category	
72.2	PPG	65.3
75.2	OPP PPG	80.0
-3.0	SCORING MARGIN	-14.7
.462	FG%	.398
.481	FG% DEF	.486
.370	3PT%	.338
.417	3PT% DEF	.401
.651	FT%	.674
.646	OPP FT%	.688
32.9	RPG	31.6
-2.2	RB MARGIN	-7.2
17.2	ASSISTS PG	12.4
15.0	TURNOVERS PG	13.4
3.9	BLOCKS PG	2.5
6.0	STEALS PG	6.5

■ The Hawks have a rebound margin of -7.2 per game. The squad's top board man is Cope-land at 5.7 rpg.

SERIES HISTORY

■ The Miners won the only previous meeting between the teams, 101-64, on Dec. 6, 1990 in the Haskins Center.

THE LAST MEETING

■ UTEP shot 63.8 percent from the field in the first half in building a 51-31 lead and coasted to a 101-64 victory over Maryland Eastern Shore on Dec. 6, 1990 in the Haskins Center.

■ A 14-2 run turned a 21-12 lead into a 35-14 advantage. **Roy Howard** scored six of his nine points during the run.

■ **Marlon Maxey** and **Johnny Melvin** scored 18 points apiece for the Miners. **Von Bennett** and **David Van Dyke** scored 14 each.

■ The Miners shot 50.7 percent from the field, made 23-of-28 free throws and outrebounded their guests 52-29. UTEP also collected 26 assists (eight from Melvin, seven from **Gym Bice**) and 15 steals.

■ Maryland Eastern Shore shot 33.3 percent from the field and received 12 points from Robert Spear. He was their only player in double figures.

LAST GAME:

NORTHERN ARIZONA 76, UTEP 74

■ Northern Arizona shot a season-high 53.7 percent from the field, including 57.7 percent in the second half, in handing UTEP a 76-74 loss on Saturday at the Haskins Center.

■ The Lumberjacks also made eight three-pointers to snap a four-game losing streak.

■ The Miners appeared headed to a runaway victory when they scored 16 of the game's first 20 points. UTEP led 22-14 midway through the first half but was outscored 20-7 over the last 9:43 to fall behind 34-29 at the intermission.

■ UTEP took a three-point lead (43-40), its largest of the second half, on a three-pointer by **Omega Harris** with 15:48 remaining. Mike Green gave Northern Arizona the lead for good, 56-55, on a layup with 9:37 to go.

■ The Miners were down by eight (72-64) with a little over three minutes to play. They pulled within three twice, the last at 74-71 on another Harris triple at the 1:14 mark. Harris missed a potential game-tying three with 17 seconds left. The Lumberjacks made a couple of free throws, rendering **Deon Barrett's** three-pointer right before the buzzer meaningless.

■ Harris led the Miners, who had four players in double figures, with 22 points. **Jake Flaggert** established career-highs for points (15) and three-pointers (five). **Dominic Artis** collected his sixth career double-double (11 points, 12 assists), and **Matt Willms** contributed 10 points and seven rebounds.

■ Jordyn Martin led Northern Arizona with 18 points. The Lumberjacks dominated the Miners on the boards, 38-24, leading to 13 second-chance points.

MINERS IN THE NCAA STATS

■ UTEP was ranked 33rd nationally in assists per game (17.2) through the games of Dec 19.

■ Individually, **Dominic Artis** was third in assists (8.4 apg), 12th in steals (2.7 spg) and 20th in minutes (36.1 avg.).

■ Artis is the only player in the country averaging at least 14 points, six rebounds and eight assists.

■ Artis and Omaha's Tra-Deon Hollins (6.8 apg/2.8 spg) are the only players ranked in the top-15 nationally in assists and steals.

■ **Dominic Artis** is the only player in the country to dish out 12 assists or more in three games this season. Artis compiled 13 in the opener versus Louisiana College, 12 at New Mexico and 12 against Northern Arizona.

National Assist Leaders (Through Dec. 19)

1. Maurice Watson Jr. (Creighton)	9.2 apg
2. Lonzo Ball (UCLA)	8.7 apg
3. Dominic Artis (UTEP)	8.4 apg
4. Kyrton Cartwright (Providence)	8.0 apg
5. Siyani Chambers (Harvard)	7.9 apg

Multiple Games With 12+ Assists (Through Dec. 19)

1. Dominic Artis (UTEP)	3
2. Kyrton Cartwright (Providence)	2
Angel Rivera (Stetson)	2
Michael Watson Jr. (Creighton)	2

ARTIS' ALL-AROUND SEASON

■ **Dominic Artis** leads the Miners in rebounding (6.3 rpg), assists (8.4 apg), steals (2.7 spg) and minutes (36.1 mpg), and ranks second in scoring (14.8 ppg).

■ Eight players have led the Miners in assists and steals in a season -- **Byron Walker** (1981-82, 1982-83), **Jeep Jackson** (1985-86), **Tim Hardaway** (1986-87, 1987-88, 1988-89), **Prince Stewart** (1989-90), **Alton Sanders** (1997-98), **Eugene Costello** (2000-01, 2001-02), **Filiberto Rivera** (2003-04) and **Edgar Moreno** (2005-06). No player has led UTEP in assists, steals and rebounds.

■ Artis has led the Miners in scoring three times, rebounds two times, assists nine times and steals eight times in 2016-17.

2016-17 UTEP BASKETBALL

■ Artis leads C-USA in assists and steals. The last Miner to lead the league in assists was **Filiberto Rivera** in the WAC in 2004-05 (7.2 apg), and the last to lead the conference in steals was **Randy Culpepper** in 2010-11 (2.03 spg).

■ Since Conference USA's inception for the 1995-96 season, only one player has led the league in assists and steal average. That was LA Tech's Kenneth Smith in 2013-14.

■ Artis' 8.4 assists per game would shatter the school record of 7.16 per contest, set by Rivera in 2004-05.

■ The Conference USA record for assists per game is held by Charlotte's Sean Colson during the 1997-98 season (7.97 apg).

■ Artis has tied the school record for most games with 12+ assists in a season (three). Rivera also compiled three such games during the 2004-05 season.

MORE ON "D.A"

■ **Dominic Artis** has career totals of 868 points, 334 rebounds, 391 assists and 127 steals in his fourth collegiate season (2012-14 at Oregon, 2015-present at UTEP). He has appeared in 95 games.

■ With nine more assists, Artis will have 400 in his career. Only three Miners have registered 400 assists in a season -- **Julyan Stone** (714), **Tim Hardaway** (563) and **Prince Stewart** (481).

■ Artis has dished out 246 assists at UTEP including 170 last season, 10th-most in school history.

■ With five more assists, Artis will tie **Eggie McRae** (251) for 15th place in school history.

■ The UTEP record for assists by a two-year player is 381 by **Filiberto Rivera** in 2003-05.

■ Artis has come close to posting only the second triple-double in school history on several occasions. Last season's close calls came versus Loyola (16 points/nine rebounds/eight assists), UTRGV (21 points/eight rebounds/eight assists), LA Tech (23 points/10 rebounds/nine assists) and Florida Atlantic (13 points/nine rebounds/nine assists). He had eight points/nine rebounds/13 assists in the opener against Louisiana College, 20 points/10 rebounds/nine assists versus Western Michigan. The only triple-double in Miner history was registered by **Jason Williams** versus Lipscomb (17 points, 11 rebounds, 10 assists) in the NIT on March 14, 2006.

■ Artis has scored in double figures in eight consecutive games, a career long streak.

■ Artis has recorded multiple steals in seven of nine games this season, including a career-high tying five at New Mexico on Dec. 7.

■ Artis has led the Miners in steals in seven consecutive games, the first UTEP player to do so since **Randy Culpepper** from Nov. 26 - Dec. 20, 2011 (seven in a row).

■ Artis has led UTEP in assists in 12 straight games dating back to the 2015-16 season, the longest streak by a Miner since **Julyan Stone** had a 17-gamer over the course of the 2008-09 and 2009-10 seasons.

OMEGA IS THE ALPHA

■ **Omega Harris** leads UTEP in scoring (17.5 ppg) after collecting 6.7 ppg as a freshman and 12.3 ppg as a sophomore.

UTEP'S RECORD WHEN ...

	2016-17 Season.....	Under Tim Floyd
Overall	2-7	124-84
Playing at home	1-4	86-28
Playing on the road	0-1	25-43
Playing on a neutral court.....	1-2	13-13
Playing during the day	1-2	30-15
Playing at night.....	1-5	94-69
Playing C-USA foes	0-0	70-43
Playing C-USA home games	0-0	43-12
Playing C-USA road games	0-0	23-28
Playing C-USA neutral games	0-0	4-3
Playing non-conference foes.....	2-7	54-41
Playing non-conference home games	1-4	43-16
Playing non-conference road games	0-1	2-14
Playing non-conference neutral games	1-2	9-11
Playing on Mondays	0-0	6-4
Playing on Tuesdays	0-1	8-5
Playing on Wednesdays.....	0-2	17-18
Playing on Thursdays.....	0-1	21-16
Playing on Fridays.....	1-0	8-10
Playing on Saturdays	1-2	50-26
Playing on Sundays.....	0-1	14-5
Playing in November	2-3	24-18
Playing in December	0-4	28-18
Playing in January	0-0	28-19
Playing in February	0-0	28-18
Playing in March.....	0-0	16-11
Playing in the Central time zone	0-0	22-26
Playing in the Eastern time zone.....	1-2	10-14
Playing in the Mountain time zone	1-5	87-39
Playing in the Pacific time zone	0-0	3-4
Playing in the Hawaii time zone	0-0	2-1
Shooting 50% or better.....	2-1	60-6
Shooting 40% or better.....	2-5	114-62
Shooting less than 40%.....	0-2	10-22
Opponent shoots 50% or better.....	0-5	3-19
Opponent shoots 40% or better.....	1-7	53-73
Opponent shoots less than 40%.....	1-0	71-11
Shooting better than opponent.....	2-0	113-27
Shooting equal or worse than opponent	0-7	11-57
Scoring first.....	1-3	79-38
Opponent scores first.....	1-4	45-46
Outrebounding opponents.....	2-1	74-13
Tied or outrebounded	0-6	50-71
Ahead at halftime.....	2-0	98-21
Behind at halftime.....	0-6	20-57
Tied at halftime.....	0-1	6-6
Ahead with 5:00 to play	2-1	106-9
Behind with 5:00 to play	0-6	15-70
Tied with 5:00 to play.....	0-0	3-5
Committing same or less turnovers.....	0-4	69-49
Committing more turnovers.....	2-3	55-35
Having 10 or more steals	0-1	12-5
Shooting better than 70% from the line.....	1-2	52-31
Scoring less than 70 points.....	0-4	50-65
Scoring between 70-79 points.....	0-2	38-15
Scoring between 80-89 points.....	2-1	30-3
Scoring between 90-99 points.....	0-0	5-1
Scoring 100 points or more.....	0-0	1-0
Games decided by five points or less	0-2	25-31
Games decided by 6-10 points.....	1-1	36-23
Games decided by 11-19 points	0-3	42-22
Games decided by 20+ points	1-1	21-8
Bench outscores opponent's bench.....	1-1	51-29
Bench is tied or outscored by opponent's	1-6	73-55



2016-17 STANDINGS (THROUGH GAMES OF 12/19)

	Conference	Overall
	W-L	W-L
Middle Tennessee	0-0	10-2
Rice	0-0	9-3
LA Tech	0-0	7-4
Marshall	0-0	7-4
Charlotte	0-0	6-4
Old Dominion	0-0	6-4
UAB	0-0	6-5
North Texas	0-0	5-5
WKU	0-0	4-7
Florida Atlantic	0-0	3-6
Southern Miss	0-0	3-6
UTSA	0-0	3-8
FIU	0-0	3-9
UTEP	0-0	2-7

UTEP IN THE C-USA STATS

Category	Stat	Rank
Assists	17.2 apg	1
Assist/turnover ratio	1.1	4
Blocked shots	3.9 bpg	7
Field goal %	.462	5
Field goal % defense	.481	14
3-point field goal %	.370	4
3-point field goal % defense	.417	14
3-point field goal/game	7.6	6
Free throw %	.651	10
Rebounding margin	-2.2 rpg	11
Scoring offense	72.2 ppg	8
Scoring defense	75.2 ppg	10
Scoring margin	-3.0	10
Steals	6.0 spg	8
Turnover margin	-0.1	8

UTEP PLAYERS IN THE C-USA STATS

(top 15 only)

Player	Category	Stat	Rank
D. Artis	Assists	8.4	1
	Assist/TO ratio	2.2	6
	Minutes	36.1	1
	Rebounding	6.3	12
	Scoring	14.8	13
D. Barrett	Steals	2.7	1
	3-point FG%	.500	t2
J. Flaggert	3-point FG%	.421	10
O. Harris	Free throw %	.844	8
	Minutes	34.5	5
	Scoring	17.5	7
	Steals	1.6	5
	3-point FG%	.378	15
K. Jones	3-point FG/game	2.1	11
	Blocked shots	1.2	10
Matt Willms	Blocked shots	1.3	7
	Field goal %	.609	1

■ Harris is a career 43.9 percent (224-for-510) shooter from the field, 40 percent (96-for-240) from three and 77.1 percent (111-for-144) from the line. He has scored 655 points.

■ Harris is four three-point field goals shy of 100 for his career, and with seven more he will tie **Kevin Henderson** (103) for 15th place in school history.

■ His .400 career three-point field goal percentage would rank fourth in the UTEP record book.

■ Harris has scored 20+ points three times in eight games this season. He had two 20-point games combined in his first two years with the Miners.

■ Dating back to last season, he has scored in double figures 15 times in his last 17 games.

■ The 17 points after halftime against Northern Arizona (Dec. 16) were the most Harris has scored in a half at UTEP. Previous most was 16 points in the first half against NM State (Dec. 19, 2015) and Norfolk State (Dec. 21, 2015) last season.

SECOND COMING

■ 7'1" **Matt Willms** returned this season after missing most of 2015-16 with a fracture of the navicular bone in his foot that required a similar surgery as fellow big men Joel Embiid and Greg Oden.

■ It was the second major surgery of Willms' career; he had surgery for a torn labrum in his shoulder in 2014.

■ Willms leads the Miners in field goal percentage (.609) while averaging 10.6 points, 5.2 rebounds and 1.3 blocks.

■ Willms has appeared in 72 games for the Miners, with 42 starts, and collected 423 points, 288 rebounds and 70 blocked shots. His career field goal percentage is .562 (163-for-290).

■ He ranks 12th in school history in blocked shots, behind **Marlon Maxey** (11th, 75 blocks).

BARRETT'S BREAKOUT

■ Freshman **Deon Barrett** scored a career-high 25 points in the second half at New Mexico on Dec. 7.

■ Barrett tied the school freshman record with seven three-pointers against the Lobos. **Randy Culpepper** also made seven versus SMU in the Conference USA Tournament on March 12, 2008 in Memphis.

■ Barrett's .875 three-point percentage (7-for-8) versus UNM was the best for a UTEP player in a game with a minimum seven makes. The previous record was .778 (7-for-9) by **Jarvis Mullahon** at NM State on Nov. 28, 1998.

■ Barrett tied the Conference USA record for three-point percentage in a game (minimum eight attempts) with his performance at UNM. Tulane's Patrick Lewis was also 7-for-8 at Saint Louis on Feb. 14, 1996.

■ Barrett's seven three-pointers against UNM are tied for the most by a C-USA player this season. LA Tech's Jacobi Boykins also made seven at Louisiana-Lafayette on Dec. 10.

FRESHMEN UNDER FLOYD

■ **Deon Barrett's** 25 points at New Mexico were the second-most by a Miner freshman under seventh-year head coach **Tim Floyd**.

■ Barrett became the seventh UTEP freshman to tally 20 points or more in a game during the Floyd era.

20-Point Games by Freshmen Under Tim Floyd

Player	Opponent/Date	Points
Vince Hunter	LA Tech (1/30/14)	26
Vince Hunter	at Southern Miss (2/22/14)	26
Deon Barrett	at New Mexico (12/7/16)	25
Cedrick Lang	Arkansas-Pine Bluff (12/29/11)	22
Julian Washburn	at SMU (3/3/12)	21
Vince Hunter	FIU (2/15/14)	21
Terry Winn	vs. Marshall (3/10/16)	21
John Bohannon	Western New Mexico (12/28/10)	20
Matt Willms	Loyola (11/9/13)	20
Vince Hunter	Marshall (1/11/14)	20
Vince Hunter	at Middle Tennessee (1/16/14)	20

JAKE DOES THE DIRTY WORK

■ **Jake Flaggert** led Conference USA in charges drawn (18) last season, and is back at it in 2016-17 with a team-leading seven in nine games.

■ Flaggert has 31 charges drawn in his Miner career (70 games).

■ Three of Flaggert's four career double-figure scoring games have come early this season, including a personal best 15 points against Northern Arizona (Dec. 17). Flaggert also had a UTEP-high five three-point field goals versus the Lumberjacks.

■ He is 9-for-9 from the line this season after entering the campaign as a career 64.3 percent foul shooter.

JONES' STORY

■ One of the freshmen UTEP is counting on this season -- 6-11 **Kelvin Jones** -- has had an amazing road to El Paso.

■ He grew up in Galeana, Chihuahua, Mexico, where his father was the mayor. He played soccer and volleyball.

■ In 2011, after cartel violence claimed two relatives, the family left in the middle of the night and moved to Bismarck, North Dakota.

■ Jones started playing basketball his freshman year in high school. He was 6-9 and the school didn't have a volleyball program.

■ He finished his prep career at Hobbs [N.M.] High School, where he averaged 14.7 points, 9.9 rebounds and 3.2 blocks for a 30-2, state championship team.

■ Jones put on 20 pounds in-between his junior and senior seasons.

■ He walked on his first year at UTEP and sold pesticides door-to-door in Houston so he could have enough money to pay for his college tuition.

■ Jones is averaging 4.1 points, 3.7 rebounds and 1.2 blocks in nine games (two starts).

■ Over the last three games, Jones has contributed 17 points, 19 rebounds and five blocks in 51 minutes.

■ Jones is averaging 10.6 rebounds per 40 minutes in 2016-17.

MINERS TIE 3-POINT RECORD

■ UTEP made 15 three-pointers at New Mexico on Dec. 7 to tie the school single-game record.

■ The Miners also made 15 triples versus UT Permian Basin (Nov. 22, 2003) and East Carolina (Feb. 13, 2010).

■ UTEP's .517 three-point percentage (15-for-29) against the Lobos was its best in a game with a minimum 20 attempts since Dec. 17, 2011 versus Southern (12-for-23, 52.2 percent).
 ■ The Miners' 15 three-pointers versus UNM tied the most by a C-USA team in 2016-17. Charlotte made 15 versus USC Upstate (Nov. 22), and Rice made 15 at Texas Tech (Dec. 3).

MINER NUGGETS

■ **Dominic Artis** has had three turnovers or fewer in each of the last three games (combined assist/turnover ratio of 33-8 during that span). In the first six games, he averaged 4.5 turnovers.
 ■ The Miners placed four starters in double figure scoring against Northern Arizona Saturday for the second time this season (Western Michigan).
 ■ UTEP shot 90 percent (9-for-10) from the line versus Northern Arizona for the first time since Dec. 17, 2011 against Southern (15-for-16, 93.8 percent).
 ■ The Miners' 10 turnovers against NAU were a season low.
 ■ The Miners are 0-6 in 2016-17 when being tied or beaten on the boards, 2-1 when out-rebounding opponents.
 ■ The Miners have averaged 7.6 steals over the last five contests.
 ■ UTEP has used seven different starting line-ups in nine games.
 ■ The Miners lead Conference USA in assists this season (17.2 apg), and have assisted on 65.7 percent (155-of-236) of their field goals. That figure also paces the league.

THE FLOYD ERA

■ UTEP has posted 124 wins under coach **Tim Floyd**, who is in his seventh season.
 ■ The Miners have fashioned a mark of 63-37 in Conference USA play under Floyd, with top-three finishes on three occasions (tied for second 2010-11, third 2012-13, tied for second 2014-15).
 ■ UTEP has registered double-digit C-USA victories in five of the six years, including in each of the last four.

MORE ON FLOYD

● **Tim Floyd** is in his seventh season on the UTEP bench with a career record of 452-264, including 124-84 with the Miners.
 ● He has the most wins among current C-USA coaches.
 ● Floyd ranks second in school history in victories behind the legendary **Don Haskins** (719) and has also coached the second-most games of any UTEP coach (208).
 ● Floyd has enjoyed 20 winning seasons in 22 years as a collegiate head coach. His teams have made eight NCAA Tournament appearances and five trips to the NIT.
 ● Floyd previously was the head coach at Idaho (1986-88), New Orleans (1988-94), Iowa State (1994-98) and USC (2005-09). He was also head coach of the Chicago Bulls (1998-2002) and the New Orleans Hornets (2003-04) in the NBA.

DEFENSE UNDER FLOYD

● UTEP has allowed less than 70 points 131 times under **Tim Floyd** (in 208 games), less than 60 points 73 times and less than 50 points on 17 occasions.
 ● The Miners have held 82 teams under 40 percent shooting, posting a 71-11 record.

UTEP Defense Under Floyd

Season	FG-FGA	Pct.	3FG-FGA	Pct.	Pts.	Avg.
2010-11	784-1958	.400	220-718	.306	2225	63.6
2011-12	718-1702	.422	188-565	.333	2019	63.1
2012-13	705-1689	.417	165-486	.340	1970	61.6
2013-14	738-1934	.382	201-681	.295	2152	63.3
2014-15	760-1832	.415	197-586	.336	2104	63.8
2015-16	853-2013	.424	268-796	.337	2471	74.9
2016-17	237-493	.481	75-180	.417	677	75.2
Totals	4795-11621	.413	1314-4012	.328	13618	65.5

UTEP CAREER GAMES PLAYED/ STARTED

Player	Games	Starts
Matt Willms	72	42
Jake Flaggert	70	11
Omega Harris	65	47
Dominic Artis	42	39
Trey Touchet	39	3
Paul Thomas	31	10
Ivan Venegas	14	0
Deon Barrett	9	2
Kelvin Jones	9	2
Chris Barnes	7	0
Tim Cameron	4	0
Jose Martinez	3	0
Hudson Urbanus	3	0

MINERS SIGNED UP FOR SAN JUAN

■ UTEP is one of eight teams participating in the 2017 Tire Pros Puerto Rico Tip-Off. The Miners will join Boise State, Florida State, Illinois State, Iowa State, South Carolina, Tulsa and Western Michigan in the event Nov. 16-19 at the Coliseo Roberto Clemente in San Juan. The tournament field was announced in November by ESPN Events.
 ■ Iowa State and Tulsa participated in the 2016 NCAA Tournament, while Florida State and South Carolina earned bids to the NIT.
 ■ UTEP will be making its first appearance in the tournament, but Miner head coach **Tim Floyd** is no stranger to the event. His USC Trojans were invited to the 2008 Puerto Rico Tip-Off.

NOVEMBER SIGNEES

■ **Evan Gilyard, Kobe Magee, Tirus Smith** and **Roderick Williams** have signed national letters of intent to play basketball at UTEP beginning with the 2017-18 season, Miner head coach **Tim Floyd** announced in November.
 ■ Gilyard is a 5-9, 160-pound guard from Simeon Career Academy in Chicago, which has produced numerous NBA standouts including Milwaukee Bucks forward Jabari Parker and New York Knicks guard Derrick Rose. Gilyard is regarded as a three-star prospect by ESPN and the no. 13 player in Illinois. He averaged 13.5 points and 3.2 assists last season while shooting 49 percent from three-point range. He was second team All-City, two-time All-Conference and honorable mention All-State. He scored 14 points in the fourth quarter of the city champi-

onship game as Simeon beat Kenwood 54-49. Gilyard, who has led Simeon Career Academy to a 96-7 record, continued to turn heads on the AAU circuit this summer while playing for the Meanstreets' 16- and 17-under teams.

■ Magee is a 6-0, 140-pound guard from Brandeis High School in San Antonio. He averaged 17.9 points as a junior with 79 three-pointers, helping Brandeis to a 31-2 mark and a top-10 state ranking. He has scored 1,281 points in 89 prep games (14.4 ppg) with 147 three-point field goals and owns a career .421 percentage from beyond the arc. A starter since his freshman year, Magee has garnered All-District honors twice and has been a part of three 20-win teams. He was appointed to the Northside NISD and San Antonio ISD All-Tournament teams on a pair of occasions.

■ Smith is a 6-8, 230-pound forward from Petal (Miss.) High School. Now in his third year as a varsity letterwinner, he was appointed to The Clarion-Ledger's "Dandy Dozen" as one of the 12 best players in the state of Mississippi for the 2016-17 campaign. He averaged 16 points, 11 rebounds and 2.5 blocks last season. Smith participated in the MAC/Mississippi Sports Medicine All-Star Classic as a member of the South team in March. Smith also played for the Elfrid Payton Elite AAU team.

■ Williams is a 6-7, 210-pound forward from Los Angeles, Calif. who is currently attending East Los Angeles College. He will have three years of eligibility with the Miners. Williams previously played at Price High School in L.A., where he was named the 2015 John R. Wooden High School Player of the Year for the CIF Los Angeles City Section (Division VI). He led Price in scoring in back-to-back years and to the semifinals at the 2015 California state playoffs. Regarded as a three-star recruit by ESPN.com and the no. 19 player in California, Williams averaged 16 points and seven rebounds as a prep senior. He was first team All-CIF.

■ The Miners' fall recruiting class also includes guards **Isiah Osborne** and **Trey Wade** who are currently with the program and sitting out the 2016-17 campaign. The 6-5, 190-pound Osborne averaged 15.0 points at the University of Windsor last year. He was named the CIS (Canadian Interuniversity Sport) Rookie of the Year as well as the OUA (Ontario University Athletics) Rookie of the Year. The 6-5, 180-pound Wade hails from South Cobb High School in Austell, Ga. He averaged 19.1 points and 7.5 rebounds as a senior in 2015-16, shooting 48 percent from the field.

LOOKING AHEAD

■ The Sun Bowl Invitational consolation and championship games are on Thursday at 5 and 7, respectively.
 ■ Following the Sun Bowl Invitational, the Miners will play four straight road games at NM State (Dec. 30), UTSA (Jan. 1), LA Tech (Jan. 5) and Southern Miss (Jan. 7). UTEP will go three weeks between home games, from Dec. 22 to Jan. 12.

2016-17 UTEP BASKETBALL

2016-17 UTEP ALPHABETICAL ROSTER

No.	Name	Pos.	Ht.	Wt.	Cl.-Exp.	Hometown (High School/Previous School)
15	Dominic Artis	G	6-3	190	SR-1L	San Francisco, Calif. (Findlay Prep/Oregon)
5	Chris Barnes	G	6-4	190	FR-HS	Compton, Calif. (Compton HS)
23	Deon Barrett	G	5-10	150	FR-HS	Lancaster, Texas (Lancaster HS)
3	Tim Cameron	G	6-4	180	FR-HS	Norcross, Ga. (Hargrave Military Academy)
11	Jake Flaggert	F	6-7	200	JR-2L	Lucas, Texas (Lovejoy HS)
2	Omega Harris	G	6-3	165	JR-2L	Bethany, Okla. (Putnam City West HS)
54	Kelvin Jones	C	6-11	230	FR-HS	Chihuahua, Mexico (Hobbs [N.M.] HS)
20	Jose Martinez	F	6-7	225	FR-HS	Chihuahua, Mexico (Faith Christian Academy)
20	Isiah Osborne*	G	6-5	190	SO-TR	Windsor, Ontario, Canada (University of Windsor)
22	Paul Thomas	F	6-8	200	SO-1L	Humble, Texas (Summer Creek HS)
21	Trey Touchet	G	6-2	180	SO-1L	Lafayette, La. (Saint Thomas More HS)
24	Hudson Urbanus	G	6-0	160	FR-HS	Austin, Texas (James Bowie HS)
13	Ivan Venegas	F	6-8	220	SO-0L	Chihuahua, Mexico (Tecnologico de Monterrey Campus)
41	Matt Willms	C	7-1	235	JR-2L	Leamington, Ontario, Canada (Findlay Prep)

2016-17 UTEP NUMERICAL ROSTER

No.	Name	Pos.	Ht.	Wt.	Cl.-Exp.	Hometown (High School/Previous School)
2	Omega Harris	G	6-3	165	JR-2L	Bethany, Okla. (Putnam City West HS)
3	Tim Cameron	G	6-4	180	FR-HS	Norcross, Ga. (Hargrave Military Academy)
5	Chris Barnes	G	6-4	190	FR-HS	Compton, Calif. (Compton HS)
11	Jake Flaggert	F	6-7	200	JR-2L	Lucas, Texas (Lovejoy HS)
13	Ivan Venegas	F	6-8	220	SO-0L	Chihuahua, Mexico (Tecnologico de Monterrey Campus)
15	Dominic Artis	G	6-3	190	SR-1L	San Francisco, Calif. (Findlay Prep/Oregon)
20	Jose Martinez	F	6-7	225	FR-HS	Chihuahua, Mexico (Faith Christian Academy)
20	Isiah Osborne*	G	6-5	190	SO-TR	Windsor, Ontario, Canada (University of Windsor)
21	Trey Touchet	G	6-2	180	SO-1L	Lafayette, La. (Saint Thomas More HS)
22	Paul Thomas	F	6-8	200	SO-1L	Humble, Texas (Summer Creek HS)
23	Deon Barrett	G	5-10	150	FR-HS	Lancaster, Texas (Lancaster HS)
24	Hudson Urbanus	G	6-0	160	FR-HS	Austin, Texas (James Bowie HS)
41	Matt Willms	C	7-1	235	JR-2L	Leamington, Ontario, Canada (Findlay Prep)
54	Kelvin Jones	C	6-11	230	FR-HS	Chihuahua, Mexico (Hobbs [N.M.] HS)

* Sitting out the 2016-17 season per NCAA transfer rules

Head Coach: Tim Floyd (Louisiana Tech '77)

Assistant Coaches: Phil Johnson (East Central Oklahoma '81), Bobby Braswell (Cal State Northridge '85), Kris Baumann (Idaho '98)

Director of Scouting and Player Personnel: J.A. Anglin (LSU Shreveport '10)

Director of Basketball Operations: Evan Eustachy (Colorado State '16)

2016-17 UTEP BASKETBALL

TEAM GAME-BY-GAME LEADERS

Date	Opponent	Result	Attendance	High Points	High Rebounds	High Assists	High Steals	High Blocks
November (2-3)								
Nov. 12	Louisiana College	W 88-54	6,295	Harris (24)	Thomas (11)	Artis (13)	Artis (4)	Two players (1)
Nov. 17	vs. Wake Forest%	L 81-103	2,925	Artis (24)	Thomas (5)	Artis (6)	Harris (3)	Willms (5)
Nov. 18	vs. Western Michigan%	W 85-75	4,020	Willms (22)	Artis (10)	Artis (9)	Artis (2)	Willms (2)
Nov. 20	vs. Mississippi State%	L 54-61	1,293	Artis (15)	Willms (11)	Artis/Flaggert (3)	Artis (2)	Two players (1)
Nov. 23	Southeastern Louisiana	L 56-72	6,348	Harris (13)	Artis/Thomas (6)	Artis (5)	Artis (4)	Three players (1)
December (0-4)								
Dec. 3	Northwestern State	L 67-79	5,928	Artis (16)	Thomas (10)	Artis (7)	Three players (1)	Jones (2)
Dec. 7	at New Mexico	L 77-78	11,838	Barrett (25)	Jones (6)	Artis (12)	Artis (5)	Three players (2)
Dec. 13	NM State	L 68-79	6,815	Harris (18)	Jones (8)	Artis (9)	Artis/Harris (3)	Flaggert (2)
Dec. 17	Northern Arizona	L 74-76	5,667	Harris (22)	Willms (7)	Artis (12)	Artis (3)	Jones (2)
Dec. 21	Maryland Eastern Shore+							
Dec. 22	Akron/UC Irvine+							
Dec. 30	at NM State							
January (0-0)								
Jan. 1	at UTSA*							
Jan. 5	at LA Tech*							
Jan. 7	at Southern Miss*							
Jan. 12	FIU*							
Jan. 14	Florida Atlantic*							
Jan. 21	UTSA*							
Jan. 26	at WKU*							
Jan. 28	at Marshall*							
February (0-0)								
Feb. 2	UAB*							
Feb. 4	Middle Tennessee*							
Feb. 9	LA Tech*							
Feb. 11	Southern Miss*							
Feb. 16	at North Texas*							
Feb. 18	at Rice*							
Feb. 23	at Florida Atlantic*							
Feb. 25	at FIU*							
March (0-0)								
March 2	Old Dominion*							
March 4	Charlotte*							
March 8	vs. TBD#							
March 9	vs. TBD#							
March 10	vs. TBD#							
March 11	vs. TBD#							

% Gildan Charleston Classic (Charleston, S.C.)
 + WestStar Bank Don Haskins Sun Bowl Invitational
 * Conference USA game
 # Conference USA Championships (Birmingham, Ala.)

2016-17 UTEP BASKETBALL

LARGEST LEAD/LARGEST DEFICIT

Date	Opponent	Result	Largest Lead	Largest Deficit	Times Tied	Lead Changes
Nov. 12	Louisiana College	W 88-54	35 (88-53, 00:47 2nd)	2 (two times)	5	7
Nov. 17	vs. Wake Forest%	L 81-103	N/A	28 (102-74, 3:49 2nd)	2	0
Nov. 18	vs. Western Michigan%	W 85-75	13 (77-64, 2:15 2nd)	3 (6-3, 17:59 1st)	5	2
Nov. 20	vs. Mississippi State%	L 54-61	11 (15-4, 14:28 1st)	7 (61-54, 00:29 2nd)	8	8
Nov. 23	Southeastern Louisiana	L 56-72	7 (7-0, 17:37 1st)	17 (two times)	2	1
Dec. 3	Northwestern State	L 67-79	5 (5-0, 18:38 1st)	13 (three times)	1	1
Dec. 7	at New Mexico	L 77-78	4 (72-68, 5:19 2nd)	21 (27-6, 12:27 1st)	4	6
Dec. 13	NM State	L 68-79	N/A	22 (61-39, 10:31 2nd)	1	0
Dec. 17	Northern Arizona	L 74-76	12 (16-4, 13:16 1st)	8 (72-64, 3:16 2nd)	6	7
Dec. 21	Maryland Eastern Shore+					
Dec. 22	Akron/UC Irvine+					
Dec. 30	at NM State					
Jan. 1	at UTSA*					
Jan. 5	at LA Tech*					
Jan. 7	at Southern Miss*					
Jan. 12	FIU*					
Jan. 14	Florida Atlantic*					
Jan. 21	UTSA*					
Jan. 26	at WKU*					
Jan. 28	at Marshall*					
Feb. 2	UAB*					
Feb. 4	Middle Tennessee*					
Feb. 9	LA Tech*					
Feb. 11	Southern Miss*					
Feb. 16	at North Texas*					
Feb. 18	at Rice*					
Feb. 23	at Florida Atlantic*					
Feb. 25	at FIU*					
March 2	Old Dominion*					
March 4	Charlotte*					
March 8	vs. TBD#					
March 9	vs. TBD#					
March 10	vs. TBD#					
March 11	vs. TBD#					

% Gildan Charleston Classic (Charleston, S.C.)

+ WestStar Bank Don Haskins Sun Bowl Invitational

* Conference USA game

Conference USA Championships (Birmingham, Ala.)

2016-17 UTEP BASKETBALL

POINTS-REBOUNDS-ASSISTS

Opponent	ARTIS	BARNES	BARRETT	CAMERON	FLAGGERT	HARRIS	JONES	MARTINEZ
Louisiana College	8-9-13*	2-2-0	6-1-6	3-3-0	5-4-2*	24-2-2*	6-3-0	0-0-0
vs. Wake Forest	24-4-6*	2-1-0	8-0-2	DNP	2-1-0*	16-2-2*	4-1-2	0-0-0
vs. Western Michigan	20-10-9*	DNP	3-1-0	DNP	13-2-0*	17-3-4*	0-1-0	DNP
vs. Mississippi State	15-5-3*	DNP	0-0-0	DNP	3-4-3*	8-4-1*	4-1-0	DNP
Southeastern Louisiana	11-6-5*	0-0-0	0-1-1*	0-0-0	6-3-1	13-2-1*	4-5-0*	DNP
Northwestern State	16-9-7*	2-1-1	8-1-1	0-0-0	14-2-0*	DNP	2-3-0	0-1-0
at New Mexico	13-4-12*	0-0-0	25-2-3	DNP	0-1-3*	22-3-1*	4-6-0	DNP
NM State	15-5-9*	0-0-0	7-1-1*	6-1-0	3-3-0	18-2-0*	7-8-0	DNP
Northern Arizona	11-5-12*	0-0-0	8-1-2	DNP	15-3-1*	22-1-2*	6-5-1*	DNP

Maryland Eastern Shore

Akron/UC Irvine

at NM State

at UTSA

at LA Tech

at Southern Miss

FIU

Florida Atlantic

UTSA

at WKU

at Marshall

UAB

Middle Tennessee

LA Tech

Southern Miss

at North Texas

at Rice

at Florida Atlantic

at FIU

Old Dominion

Charlotte

vs. TBD

vs. TBD

vs. TBD

vs. TBD

Opponent	MOORE	THOMAS	TOUCHET	URBANUS	VENEGAS	WILLMS	WINN
Louisiana College	0-0-0	1-11-3*	9-2-2	DNP	0-1-0	9-4-0	15-8-1*
vs. Wake Forest	DNP	8-5-5	0-0-0	0-0-0	0-0-0	13-2-0*	4-4-1*
vs. Western Michigan	DNP	0-5-1*	0-0-0	DNP	DNP	22-7-2*	10-5-0
vs. Mississippi State	DNP	7-5-0*	5-1-1	DNP	DNP	12-11-2*	DNP
Southeastern Louisiana	DNP	4-6-1	6-0-1	0-0-0	0-1-0	12-3-2*	-
Northwestern State	-	2-10-2*	13-3-2*	0-1-1	2-0-0	8-3-0*	-
at New Mexico	-	6-1-1*	4-2-0	DNP	2-1-0	1-4-2*	-
NM State	-	4-1-1*	0-1-1	DNP	DNP	8-6-0*	-
Northern Arizona	-	0-0-0	2-2-3	DNP	0-0-0	10-7-0*	-

Maryland Eastern Shore

Akron/UC Irvine

at NM State

at UTSA

at LA Tech

at Southern Miss

FIU

Florida Atlantic

UTSA

at WKU

at Marshall

UAB

Middle Tennessee

LA Tech

Southern Miss

at North Texas

at Rice

at Florida Atlantic

at FIU

Old Dominion

Charlotte

vs. TBD

vs. TBD

vs. TBD

vs. TBD

2016-17 UTEP BASKETBALL

HIGHS AND LOWS

- 2016-17 UTEP Highs -

1st Half Points	45 vs. LA College (11-12-16)
2nd Half Points	48 vs. Western Michigan (11-18-16)
Total Points	88 vs. LA College (11-12-16)
Field Goals	34 vs. LA College (11-12-16)
Field Goals Att.	63 vs. SE Louisiana (11-23-16)
Field Goal Pct.	.587 vs. Western Michigan (11-18-16)
3pt Field Goals	15 at New Mexico (12-7-16)
3pt Field Goals Att.	31 vs. N. Arizona (12-17-16)
3pt Field Goal Pct.	.571 at New Mexico (12-7-16)
Free Throws	23 vs. Western Michigan (11-18-16)
Free Throws Att.	30 vs. Western Michigan (11-18-16)
FT Pct.	.900 vs. N. Arizona (12-17-16)
Off. Rebounds	14 vs. SE Louisiana (11-23-16)
Def. Rebounds	42 vs. LA College (11-12-16)
Total Rebounds	52 vs. LA College (11-12-16)
Assists	29 vs. LA College (11-12-16)
Steals	10 vs. SE Louisiana (11-23-16)
Blocked Shots	7 vs. Wake Forest (11-17-16)
Turnovers	22 vs. LA College (11-12-16)
Fouls	27 vs. NM State (12-3-16)

- 2016-17 UTEP Lows -

1st Half Points	25 vs. NM State (12-13-16)
2nd Half Points	21 vs. Miss. State (11-20-16)
Total Points	54 vs. Miss. State (11-20-16)
Field Goals	19 vs. Miss. State (11-20-16)
Field Goals Att.	46 vs. Western Michigan (11-18-16)
Field Goal Pct.	.333 vs. SE Louisiana (11-23-16)
3pt Field Goals	4 two times
3pt Field Goals Att.	13 vs. NM State (12-13-16)
3pt Field Goal Pct.	.182 vs. Miss. State (11-20-16)
Free Throws	8 at New Mexico (12-7-16)
Free Throws Att.	10 vs. N. Arizona (12-17-16)
FT Pct.	.524 vs. NW State (12-3-16)
Off. Rebounds	5 vs. N. Arizona (12-17-16)
Def. Rebounds	16 vs. Wake Forest (11-17-16)
Total Rebounds	24 two times
Assists	10 vs. Miss. State (11-20-16)
Steals	2 two times
Blocked Shots	2 two times
Turnovers	12 two times
Fouls	10 vs. N. Arizona (12-17-16)

- 2016-17 Opponent Highs -

1st Half Points	63 by Wake Forest (11-17-16)
2nd Half Points	43 by Western Michigan (11-18-16)
Total Points	103 by Wake Forest (11-17-16)
Field Goals	35 by Wake Forest (11-17-16)
Field Goals Att.	62 by Western Michigan (11-18-16)
Field Goal Pct.	.593 by Wake Forest (11-17-16)
3pt Field Goals	13 by Wake Forest (11-17-16)
3pt Field Goals Att.	26 by NW State (12-3-16)
3pt Field Goal Pct.	.619 by Wake Forest (11-17-16)
Free Throws	21 by New Mexico (12-7-16)
Free Throws Att.	32 by New Mexico (12-7-16)
FT Pct.	.857 by Miss. State (11-20-16)
Off. Rebounds	14 by SE Louisiana (11-23-16)
Def. Rebounds	33 by SE Louisiana (11-23-16)
Total Rebounds	47 by SE Louisiana (11-23-16)
Assists	22 by Wake Forest (11-17-16)
Steals	11 by LA College (11-12-16)
Blocked Shots	4 by SE Louisiana (11-23-16)
Turnovers	20 by NM State (12-13-16)
Fouls	24 by Western Michigan (11-18-16)

- 2016-17 Opponent Lows -

1st Half Points	29 by LA College (11-12-16)
2nd Half Points	25 by LA College (11-12-16)
Total Points	54 by LA College (11-12-16)
Field Goals	18 by LA College (11-12-16)
Field Goals Att.	44 by New Mexico (12-7-16)
Field Goal Pct.	.300 by LA College (11-12-16)
3pt Field Goals	6 two times
3pt Field Goals Att.	14 by New Mexico (12-7-16)
3pt Field Goal Pct.	.292 by LA College (11-12-16)
Free Throws	10 two times
Free Throws Att.	14 by Miss. State (11-20-16)
FT Pct.	.481 by NW State (12-3-16)
Off. Rebounds	5 by New Mexico (12-7-16)
Def. Rebounds	18 by Western Michigan (11-18-16)
Total Rebounds	29 two times
Assists	9 by NM State (12-13-16)
Steals	5 two times
Blocked Shots	0 by Western Michigan (11-18-16)
Turnovers	8 by Miss. State (11-20-16)
Fouls	14 by New Mexico (12-7-16)

2016-17

MARGIN OF VICTORY/DEFEAT

Margin	Won By	Lost By	Record
1	-	1	0-1
2	-	1	0-1
3	-	-	-
4	-	-	-
5	-	-	-
6	-	-	-
7	-	1	0-1
8	-	-	-
9	-	-	-
10	1	-	1-0
11	-	1	0-1
12	-	1	0-1
13	-	-	-
14	-	-	-
15	-	-	-
16	-	1	0-1
17	-	-	-
18	-	-	-
19	-	-	-
20	-	-	-
21	-	-	-
22	-	1	0-1
23	-	-	-
24	-	-	-
25	-	-	-
26	-	-	-
27	-	-	-
28	-	-	-
29	-	-	-
30	-	-	-
34	1	-	1-0

Largest Home Win 34 (88-54), LA College (11-12-16)
 Largest Home Loss 16 (72-56), SE Louisiana (11-23-16)

Largest Road Win N/A
 Largest Road Loss 1 (78-77), New Mexico (12-7-16)

Largest Neutral Win 10 (85-75), Western Michigan (11-18-16)
 Largest Neutral Loss 22 (103-81), Wake Forest (11-17-16)

UTEP SCORING

	1st Half	2nd Half	OT	Total
UTEP	313	337	0	650
Opponents	360	317	0	677

SCORING AVERAGE

	1st Half	2nd Half	OT	Total
UTEP	34.8	37.4	0.0	72.2
Opponent	40.0	35.2	0.0	75.2

THE LAST TIME

Team

65 percent shooting by a team

UTEP: vs. Colorado State (.660, 31-47), 1-24-89

Opponent: at UCF (.702, 40-57), 1-23-08

60 percent shooting by a team

UTEP: vs. FIU (.610, 25-41), 3-12-15

Opponent: at Oregon State (.605, 26-43), 3-30-09

Less than 30 percent shooting by a team

UTEP: vs. SMU (.292, 21-72), 2-25-09

Opponent: North Texas (.258, 17-66), 3-2-14

60 percent three-point shooting by a team (minimum 10 attempts)

UTEP: vs. UTSA (.647, 11-17), 3-5-16

Opponent: Wake Forest (.619, 13-21), 11-17-16

100 percent free throw shooting by a team (minimum 10 attempts)

UTEP: at Boise State (10-10), 1-1-05

Opponent: Southern Illinois (9-9), 11-27-15

45 made field goals in a game

UTEP: vs. Illinois Tech (46), 12-22-79

60 rebounds in a game

UTEP: vs. Houston Baptist (61), 11-30-91

Opponent: Colorado State (73), 11-28-15

25 assists in a game

UTEP: vs. LA College (29), 11-12-16

Opponent: at UCF (25), 1-23-08

10 blocked shots in a game

UTEP: vs. FIU (10), 3-12-15

Opponent: Kansas (11), 11-30-13

15 steals in a game

UTEP: vs. Norfolk State (18), 12-28-09

Opponent: Vanderbilt (15), 11-25-12

25 turnovers in a game

UTEP: at New Mexico State (27), 12-9-06

Opponent: Western New Mexico (26), 12-28-10

+20 rebound margin

UTEP: vs. LA College (52-29), 11-12-16

Opponent: Old Dominion (51-26), 2-25-16

Scored 100 points

UTEP: vs. Marshall (112), 1-4-16

Opponent: Wake Forest (101), 11-17-16

Seven players in double figures

UTEP: vs. Arkansas-Pine Bluff, 12-22-03

Six players in double figures

UTEP: at Florida Atlantic, 2-13-16

Opponent: New Mexico, 1-2-08

Five starters in double figures

UTEP: vs. Marshall, 3-10-16

Opponent: LA Tech, 1-31-16

70 percent shooting in a half

UTEP: at Charlotte (.750, 21-28), first half, 2-27-16

Opponent: Wake Forest (.739, 17-23), 2nd half, 11-17-16

65 percent shooting in a half

UTEP: vs. Western Mich. (.667, 14-21), second half, 11-18-16

Opponent: Wake Forest (.739, 17-23), 2nd half, 11-17-16

70 points in a half

UTEP: vs. New Mexico Highlands (78),

2nd half, 12-30-00

60 points in a half

UTEP: vs. Marshall (65), second half, 1-4-16

Opponent: Wake Forest (63), first half, 11-17-16

Individual

40-point scorer

UTEP: Randy Culpepper vs. East Carolina (45), 2-13-10

Opponent: James Harden, Arizona State (40), 11-30-08

30-point scorer

UTEP: Lee Moore vs. FIU (30), 3-9-16

Opponent: Gian Clavell, Colorado State (35), 11-28-15

Three players with 20 points in a game

UTEP: vs. Fresno State (Roy Smallwood 25, Jarvis Mullahon 23, Brandon Wolfram 23), 2-12-00

Opponent: Marshall (James Kelly 26, Jon Elmore 21, Ryan Taylor 20), 1-4-16

A player made 15 field goals

UTEP: Antoine Gillespie at Hawaii (15), 2-17-94

Opponent: Trey Johnson, Jackson State (15), 12-22-06

A player made five three-point field goals

UTEP: Jake Flaggert vs. N. Arizona (5), 12-17-16

Opponent: Austin Loop, Marshall (6), 3-10-16

A player made 15 free throws

UTEP: Stefan Jackson vs. Marshall (20), 2-14-09

Opponent: Jontae Sherrod, East Carolina (15), 2-23-11

A player had 20 rebounds

UTEP: JoJo Garcia vs. BYU (22), 2-1-97

Opponent: Pascal Siakam, NM State (23), 12-2-15

A player had 15 rebounds

UTEP: Vince Hunter vs. Kent State (16), 12-22-14

Opponent: Brandan Stith, Old Dominion (15), 2-25-16

Two players had double-doubles in a game

UTEP: Vince Hunter (17 points-12 rebounds) and Cedrick Lang (13 points-10 rebounds) vs.

Xavier, 11-28-14

Opponent: James Kelly (13 points-11 rebounds)

and Ryan Taylor (21 points-14 rebounds),

Marshall, 3-10-16

A player had a double-double (points-rebounds)

UTEP: Matt Willms vs. Mississippi State

(12 points-11 rebounds), 11-20-16

Opponent: Jemarrio Jones, NM State

(18 points-13 rebounds), 12-13-16

A player had a double-double (points-assists)

UTEP: Dominic Artis vs. N. Arizona

(11 points-12 assists), 12-17-16

Opponent: Cameron Payne, Murray State

(14 points-10 assists), 3-17-15

A player had a triple-double (points-rebounds-assists)

UTEP: Jason Williams vs. Lipscomb (17 points-

11 rebounds-10 assists), 3-14-06

A player had 10 assists in a game

UTEP: Dominic Artis vs. N. Arizona (12), 12-17-16

Opponent: Cameron Payne, Murray State (10), 3-17-15

A player led the team in scoring, rebounding and assists in the same game

UTEP: Lee Moore vs. FIU

(30 points-seven rebounds-five assists), 3-9-16

Opponent: Tucker Haymond, Western Michigan

(20 points-eight rebounds-six assists), 11-18-16

A player had five steals in a game

UTEP: Dominic Artis at New Mexico (5), 12-7-16

Opponent: Cortez Edwards, Southern Miss

(5), 2-18-16

A player had five blocked shots in a game

UTEP: Matt Willms vs. Wake Forest (5), 11-17-16

Opponent: William Lee, UAB (5), 1-9-16

2016-17 UTEP ATTENDANCE

Site	Games	Total	Avg./game
Home	5	31,053	6210.6
Away	1	11,838	11838.0
Neutral	3	8,238	2746.0
Total	9	50,949	5661.0

UTEP BY THE NUMBERS

Total games	2,377 (1,361-1,016)
Seasons of men's basketball	96th
Conference championships	12 (last in 2010)
NCAA Tournament appearances	17 (last in 2010)
NIT appearances	11 (last in 2015)
20-win seasons	26 (last in 2015)
Overtime games	105 (61-44)
UTEP 100-point games	30 (28-2)

2016-17 UTEP BASKETBALL

CHARTING THE MINERS

Charges Drawn

Jake Flaggert	7
Omega Harris	2
Dominic Artis	1
Matt Willms	1
UTEP	11
Opponents	4

Consecutive Games Scored

Omega Harris	37
Dominic Artis	22
Matt Willms	9
Kelvin Jones	6
Deon Barrett	4
Jake Flaggert	2
Tim Cameron	1
Trey Touchet	1

Consecutive Games Scoring In Double Figures

Dominic Artis	8
Omega Harris	4
Jake Flaggert	1
Matt Willms	1

Consecutive Games With A 3-Pointer

Omega Harris	6
Deon Barrett	4
Jake Flaggert	2

Double Doubles

Player	Season	Career
Dominic Artis	3	6
Matt Willms	1	1

Triple Doubles

Player	Season	Career
None		

Double Figure Rebounding Games

Player	Season	Career
Paul Thomas	2	2
Dominic Artis	1	4
Matt Willms	1	1

Double Figure Scoring Games

Player	Season	Career
Dominic Artis	8	27
Omega Harris	7	33
Matt Willms	5	13
Jake Flaggert	3	4
Deon Barrett	1	1
Trey Touchet	1	1

Dunks

Player	Season	Career
Matt Willms	9	59
Kelvin Jones	5	5
Jake Flaggert	1	3
Omega Harris	1	3
Paul Thomas	0	2
UTEP	16	72
Opponents	25	-

Fast Break Points

Opponent	UTEP	Opp.	Margin
LA College	14	8	+6
vs. Wake Forest	2	8	-6
vs. Western Michigan	6	4	+2
vs. Mississippi State	6	6	Even
SE Louisiana	2	8	-6
Northwestern St.	2	2	Even
at New Mexico	14	8	+6
NM State	11	11	Even
Northern Arizona	8	0	+8
Maryland Eastern Shore			
TBD			
at NM State			
at UTSA			
at LA Tech			
at Southern Miss			
FIU			
Florida Atlantic			
UTSA			
at WKU			
at Marshall			
UAB			
Middle Tennessee			
LA Tech			
Southern Miss			
at North Texas			
at Rice			
at Florida Atlantic			
at FIU			
Old Dominion			
Charlotte			
Totals	65	55	+10

First Points For UTEP

Jake Flaggert	2
Matt Willms	2
Dominic Artis	1
Deon Barrett	1
Omega Harris	1
Paul Thomas	1
Matt Willms	1

First Substitution For UTEP

Kelvin Jones	2
Paul Thomas	2
Trey Touchet	2
Chris Barnes	1
Jake Flaggert	1
Ivan Venegas	1
Matt Willms	1

How UTEP Scored Its First Points

Three-pointer	3
Jumper	2
Free throw	1
Hook shot	1
Layup	1
Tip-in	1
Dunk	0
Runner	0

Jump Balls Forced

UTEP	0
Opponents	5

Opening Tip Controlled By . . .

UTEP	8 (1-7)
Opponents	1 (1-0)

Points In The Paint

Opponent	UTEP	Opp.	Margin
LA College	52	18	+34
vs. Wake Forest	32	30	+2
vs. Western Michigan	32	18	+14
vs. Mississippi State	18	20	-2
SE Louisiana	22	32	-10
Northwestern St.	28	20	+8
at New Mexico	16	24	-8
NM State	28	36	-8
Northern Arizona	30	32	-2
Maryland Eastern Shore			
TBD			
at NM State			
at UTSA			
at LA Tech			
at Southern Miss			
FIU			
Florida Atlantic			
UTSA			
at WKU			
at Marshall			
UAB			
Middle Tennessee			
LA Tech			
Southern Miss			
at North Texas			
at Rice			
at Florida Atlantic			
at FIU			
Old Dominion			
Charlotte			
Totals	258	230	+28

Points Off Turnovers

Opponent	UTEP	Opp.	Margin
LA College	20	19	+1
vs. Wake Forest	20	24	-4
vs. Western Michigan	15	20	-5
vs. Mississippi State	5	10	-5
SE Louisiana	21	14	+7
Northwestern St.	8	16	-8
at New Mexico	20	14	+6
NM State	17	14	+3

CHARTING THE MINERS

Northern Arizona	25	16	+9
Maryland Eastern Shore			
TBD			
at NM State			
at UTSA			
at LA Tech			
at Southern Miss			
FIU			
Florida Atlantic			
UTSA			
at WKU			
at Marshall			
UAB			
Middle Tennessee			
LA Tech			
Southern Miss			
at North Texas			
at Rice			
at Florida Atlantic			
at FIU			
Old Dominion			
Charlotte			
Totals	151	147	+4

Second Chance Points

Opponent	UTEP	Opp.	Margin
LA College	6	5	+1
vs. Wake Forest	8	14	-6
vs. Western Michigan	11	18	-7
vs. Mississippi State	8	8	Even
SE Louisiana	8	11	-3
Northwestern St.	7	9	-2
at New Mexico	13	7	+6
NM State	8	9	-1
Northern Arizona	4	13	-9
Maryland Eastern Shore			
TBD			
at NM State			
at UTSA			
at LA Tech			
at Southern Miss			
FIU			
Florida Atlantic			
UTSA			
at WKU			
at Marshall			
UAB			
Middle Tennessee			
LA Tech			
Southern Miss			
at North Texas			
at Rice			
at Florida Atlantic			
at FIU			
Old Dominion			
Charlotte			
Totals	73	94	-21

Three-Point Plays (FG+FT)

Dominic Artis	3
Omega Harris	3
Tim Cameron	2
Matt Willms	2
Kelvin Jones	1
Paul Thomas	1
UTEP	12
Opponents	16

Four-Point Plays

UTEP	0
Opponents	1

Times Led UTEP In Assists

Player	Season	Career
Dominic Artis	9	31
Jake Flaggert	1	1
Omega Harris	0	7

Times Led UTEP In Rebounding

Player	Season	Career
Paul Thomas	4	5
Dominic Artis	2	11
Matt Willms	2	10
Kelvin Jones	2	2
Jake Flaggert	0	1

Times Led UTEP In Scoring

Player	Season	Career
Omega Harris	4	9
Dominic Artis	3	10
Matt Willms	1	3
Deon Barrett	1	1

20-Point Games

Player	Season	Career
Omega Harris	3	5
Dominic Artis	2	5
Matt Willms	1	2
Deon Barrett	1	1

30-Point Games

Player	Season	Career
Dominic Artis	0	1

2016-17 UTEP BASKETBALL

Starting Lineups

Opponent	SG	PG	PF	SF	C
Louisiana College	Harris	Artis	Thomas	Flaggert	Winn^
vs. Wake Forest	Harris	Artis	Winn	Flaggert	Willms
vs. Western Michigan	Harris	Artis	Thomas	Flaggert	Willms
vs. Mississippi State	Harris	Artis	Thomas	Flaggert	Willms
Southeastern Louisiana	Harris	Artis	Jones	Barrett*	Willms
Northwestern State	Touchet	Artis	Thomas	Flaggert	Willms
at New Mexico	Harris	Artis	Thomas	Flaggert	Willms
NM State	Harris	Artis	Thomas	Barrett*	Willms
Northern Arizona	Harris	Artis	Jones	Flaggert	Willms
Maryland Eastern Shore					
Akron/UC Irvine					
at NM State					
at UTSA					
at LA Tech					
at Southern Miss					
FIU					
Florida Atlantic					
UTSA					
at WKU					
at Marshall					
UAB					
Middle Tennessee					
LA Tech					
Southern Miss					
at North Texas					
at Rice					
at Florida Atlantic					
at FIU					
Old Dominion					
Charlotte					
vs. TBD					

Starting Lineup Records (sorted by win percentage)

Harris (g) - Artis (g) - Thomas (f) - Flaggert (f) - Winn (f)	1-0
Harris (g) - Artis (g) - Thomas (f) - Flaggert (f) - Willms (c)	1-2
Harris (g) - Artis (g) - Barrett (g) - Jones (f) - Willms (c)	0-1
Harris (g) - Artis (g) - Barrett (g) - Thomas (f) - Willms (c)	0-1
Harris (g) - Artis (g) - Jones (f) - Flaggert (f) - Willms (c)	0-1
Harris (g) - Artis (g) - Winn (f) - Flaggert (f) - Willms (c)	0-1
Touchet (g) - Artis (g) - Thomas (f) - Flaggert (f) - Willms (c)	0-1

^ Started as a third forward

* Started as a third guard

Started as a fourth guard

UTEP Point Production

Seniors	pts	rbs
Dominic Artis	133	57
Totals	133	57
Average	14.8	6.3
Percentage	20.5	21.0

Juniors	pts	rbs
Jake Flaggert	61	23
Omega Harris	140	19
Matt Willms	95	47
Totals	296	89
Average	32.9	9.9
Percentage	45.5	32.7

Sophomores	pts	rbs
Paul Thomas	32	44
Trey Touchet	39	11
Ivan Venegas	4	3
Totals	104	75
Average	11.6	8.3
Percentage	16.0	27.6

Freshmen	pts	rbs
Chris Barnes	6	4
Deon Barrett	65	8
Tim Cameron	9	4
Kelvin Jones	37	33
Jose Martinez	0	1
Hudson Urbanus	0	1
Totals	117	51
Average	13.0	5.7
Percentage	18.0	18.8

UTEP Bench Scoring

Player	Games Off Bench	Points Scored	Avg.
Terry Winn	1	10	10.0
Matt Willms	1	9	9.0
Deon Barrett	7	58	8.3
Jake Flaggert	2	9	4.5
Paul Thomas	3	12	4.0
Kelvin Jones	7	27	3.9
Trey Touchet	8	26	3.3
Tim Cameron	4	9	2.3
Chris Barnes	7	6	0.9
Ivan Venegas	6	4	0.7
Jose Martinez	3	0	0.0
Hudson Urbanus	3	0	0.0
Adrian Moore	1	0	0.0
Totals	9	170	18.9
Opponents	9	200	22.2

Crunch Time Free Throws

(Free throws shot in the final three minutes of regulation and overtime of games decided by less than 10 points)

Player	FT-FTA	PCT
Dominic Artis	0-1	.000
Team	0-1	.000
Opponents	4-6	.667

Miners In Double Figures

UTEP's record when each of the following players score in double figures:

Player	Record
Dominic Artis	1-7
Deon Barrett	0-1
Jake Flaggert	1-2
Omega Harris	2-5
Trey Touchet	0-1
Matt Willms	1-4

Record When . . .

Seven players score in DF	0-0
Six players score in DF	0-0
Five players score in DF	1-0
Four players score in DF	0-1
Three players score in DF	0-4
Two players score in DF	1-2
One player scores in DF	0-0
No players score in DF	0-0

Scoring Breakdown

Player	1st	2nd	OT	Total
Dominic Artis	68	65	-	133
Chris Barnes	2	4	-	6
Deon Barrett	14	51	-	65
Tim Cameron	0	9	-	9
Jake Flaggert	32	29	-	61
Omega Harris	69	71	-	140
Kelvin Jones	15	22	-	37
Jose Martinez	0	0	-	0
Paul Thomas	20	12	-	32
Trey Touchet	23	16	-	39
Ivan Venegas	2	2	-	4
Matt Willms	54	41	-	95
Totals	313	337	-	650

2016-17 UTEP BASKETBALL

New Mexico 78, UTEP 77

Dec. 7, 2016 • Albuquerque, N.M. • The Pit

Player	fg	fga	fg	fga	ft	fta	of	de	tot	pf	tp	a	to	blk	s	min
Flaggert	f	0	2	0	1	0	0	0	1	5	0	3	1	0	1	22
Thomas	f	3	4	0	0	0	0	1	0	1	4	6	1	1	0	13
Willms	c	0	3	0	0	1	2	2	4	3	1	2	3	2	0	31
Harris	g	7	16	4	10	4	4	0	3	3	2	2	1	0	2	38
Artis	g	5	13	3	5	0	1	1	3	4	3	13	12	3	0	38
Barnes	g	0	0	0	0	0	0	0	0	0	0	0	0	0	0	1
Venegas	g	1	1	0	0	0	0	1	0	1	0	2	0	0	0	3
Touchet	g	1	6	1	5	1	2	0	2	0	4	0	2	0	1	15
Barrett	g	8	9	7	8	2	2	1	1	2	1	25	3	0	0	19
Jones	g	2	4	0	0	0	3	1	5	6	5	4	0	2	0	20
TEAM																
Totals		27	58	15	29	8	14	8	18	26	24	77	22	13	6	9

TOTAL FG% 1st Half: 14-33 42.4% 2nd Half: 13-25 52.0% Game: 46.6% DEADBALL
 3-Pt. FG% 1st Half: 6-14 42.9% 2nd Half: 9-15 60.0% Game: 51.7% REBOUNDS
 F Throw % 1st Half: 5-9 55.6% 2nd Half: 3-5 60.0% Game: 57.1% 3

Player	fg	fga	fg	fga	ft	fta	of	de	tot	pf	tp	a	to	blk	s	min
Logwood	f	4	7	1	2	2	4	1	1	2	0	11	6	1	0	27
Furstinger	f	2	4	0	0	2	2	0	3	3	6	0	2	1	1	25
Agel	c	4	5	0	0	1	2	1	3	4	0	9	0	1	1	24
Hunter	g	4	6	2	3	0	0	0	4	4	2	10	6	3	0	33
Brown	g	8	13	3	7	6	11	0	6	6	0	25	0	3	0	35
Harris	g	0	0	0	0	0	0	1	1	2	0	1	2	0	0	7
Kuiper	g	1	1	1	1	2	0	3	3	1	4	0	1	1	0	16
Adams	g	0	3	0	1	4	1	1	2	4	0	0	0	0	1	15
Jefferson	g	0	2	0	0	0	0	0	0	1	0	0	2	0	0	8
Mathis	g	0	0	0	0	0	0	0	1	1	0	0	0	0	0	4
MacDougall	g	2	3	0	0	5	7	1	3	4	3	9	0	1	0	16
TEAM																
Totals		25	44	7	14	21	32	5	26	31	14	78	13	15	3	6

TOTAL FG% 1st Half: 15-27 55.6% 2nd Half: 10-17 58.8% Game: 56.8% DEADBALL
 3-Pt. FG% 1st Half: 6-11 54.5% 2nd Half: 1-3 33.3% Game: 50.0% REBOUNDS
 F Throw % 1st Half: 11-14 78.6% 2nd Half: 10-18 55.6% Game: 65.6% 7

Officials: John Higgins, Chris Rastatter, Gerry Pollard

Attendance: 11,838

Score by Periods

	1st	2nd	Total
UTEP	39	38	77
New Mexico	47	31	78

Points in the paint-UTEP 16, UNM 24. Points off turnovers-UTEP 20, UNM 14.
 2nd chance points-UTEP 13, UNM 7. Fast break points-UTEP 14, UNM 8.
 Bench points-UTEP 35, UNM 17. Score tied-4 times. Lead changed-6 times.
 Last FG-UTEP 2nd-00:30, UNM 2nd-00:05.
 Largest lead-UTEP by 4 2nd-05:19, UNM by 21 1st-12:27.

NM State 79, UTEP 68

Dec. 13, 2016 • El Paso, Texas • Don Haskins Center

Player	fg	fga	fg	fga	ft	fta	of	de	tot	pf	tp	a	to	blk	s	min
Wilkins	f	4	4	0	0	1	2	2	2	4	4	9	1	2	0	19
Chuha	f	4	10	0	0	3	5	2	6	8	2	11	0	1	1	21
Haley	g	3	6	2	3	1	3	1	2	3	4	9	3	1	1	30
Huggins	g	1	4	0	2	0	1	0	2	2	0	2	1	1	0	23
Baker	g	7	13	3	7	3	4	0	5	5	1	20	1	5	0	36
Jones	g	6	7	1	1	5	5	3	10	13	3	18	3	5	1	26
Garza	g	0	1	0	1	0	0	0	0	0	0	0	0	0	0	6
Bhullar	g	1	3	0	0	1	1	0	0	0	0	3	0	1	0	5
Taylor	g	1	2	0	1	3	4	0	1	1	4	5	0	1	0	25
Pennie	g	1	1	0	0	0	1	0	1	0	2	0	1	0	0	9
TEAM																
Totals		28	51	6	15	17	26	8	30	38	18	79	9	20	3	6

TOTAL FG% 1st Half: 15-24 62.5% 2nd Half: 13-27 48.1% Game: 54.9% DEADBALL
 3-Pt. FG% 1st Half: 5-7 71.4% 2nd Half: 1-8 12.5% Game: 40.0% REBOUNDS
 F Throw % 1st Half: 6-10 60.0% 2nd Half: 11-16 68.8% Game: 65.4% 3

Player	fg	fga	fg	fga	ft	fta	of	de	tot	pf	tp	a	to	blk	s	min
Thomas	f	2	6	0	0	0	1	0	1	1	3	4	1	3	0	18
Willms	c	3	6	0	0	2	3	2	4	6	4	8	0	2	0	23
Harris	g	6	12	2	4	4	6	0	2	2	2	18	0	2	0	38
Artis	g	6	14	0	2	3	4	0	5	5	2	15	9	3	0	36
Barrett	g	3	7	1	3	0	0	0	1	1	1	7	1	2	0	30
Cameron	g	2	3	0	1	2	3	1	0	1	1	6	0	0	0	5
Barnes	g	0	0	0	0	0	0	0	0	0	0	0	0	0	0	1
Flaggert	g	1	3	1	3	0	0	1	2	3	5	3	0	2	2	21
Touchet	g	0	1	0	0	0	0	0	1	1	0	0	1	1	0	11
Jones	g	3	6	0	0	1	3	3	5	8	2	7	0	1	0	17
TEAM																
Totals		26	58	4	13	20	7	21	28	20	68	12	16	3	8	

TOTAL FG% 1st Half: 10-29 34.5% 2nd Half: 16-29 55.2% Game: 44.8% DEADBALL
 3-Pt. FG% 1st Half: 0-4 0.0% 2nd Half: 4-9 44.4% Game: 30.8% REBOUNDS
 F Throw % 1st Half: 5-10 50.0% 2nd Half: 7-10 70.0% Game: 60.0% 3

Officials: John Higgins, Kelly Self, Rick Crawford

Attendance: 6,815

Score by Periods

	1st	2nd	Total
NM State	41	38	79
UTEP	25	43	68

Points in the paint-UTEP 28, NMSU 36. Points off turnovers-UTEP 17, NMSU 14.
 2nd chance points-UTEP 8, NMSU 9. Fast break points-UTEP 11, NMSU 11.
 Bench points-UTEP 16, NMSU 28. Score tied-1 time. Lead changed-0 times.
 Last FG-UTEP 2nd-00:38, NMSU 2nd-02:33.
 Largest lead-UTEP None, NMSU by 22 2nd-10:31.

Northern Arizona 76, UTEP 74

Dec. 17, 2016 • El Paso, Texas • Don Haskins Center

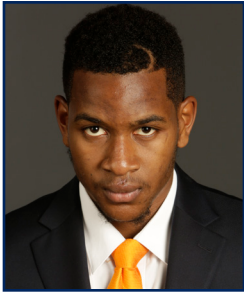
Player	fg	fga	fg	fga	ft	fta	of	de	tot	pf	tp	a	to	blk	s	min
Kaluna	f	2	7	0	3	2	3	1	7	8	3	6	3	0	0	27
Martin	f	8	12	0	1	2	3	7	2	9	3	18	2	3	0	30
Anderson	g	3	5	2	4	0	0	1	2	3	2	8	4	6	0	27
Seck	g	3	4	0	0	2	5	0	2	2	2	8	0	0	0	15
DeBerry	g	5	11	3	7	0	0	0	7	7	0	13	3	1	0	34
Brown	g	0	1	0	0	0	0	0	1	1	1	0	0	0	0	5
Green	g	4	8	1	3	2	2	0	2	2	1	11	4	4	0	24
Neely	g	3	4	2	2	1	2	0	0	0	3	9	4	1	0	20
Rivera-Vega	g	0	0	0	0	0	0	0	1	1	0	0	0	1	0	2
DeBisschop	g	1	2	0	1	1	2	1	2	3	1	3	1	3	0	16
TEAM																
Totals		29	54	8	21	10	17	10	28	38	16	76	21	19	0	3

TOTAL FG% 1st Half: 14-28 50.0% 2nd Half: 15-26 57.7% Game: 53.7% DEADBALL
 3-Pt. FG% 1st Half: 4-13 30.8% 2nd Half: 4-8 50.0% Game: 38.1% REBOUNDS
 F Throw % 1st Half: 2-6 33.3% 2nd Half: 8-11 72.7% Game: 58.8% 3

Player	fg	fga	fg	fga	ft	fta	of	de	tot	pf	tp	a	to	blk	s	min
Flaggert	f	5	7	5	7	0	0	0	3	3	4	15	1	0	0	34
Jones	f	3	5	0	0	2	0	2	3	5	5	6	1	1	2	14
Willms	c	5	7	0	0	0	0	1	6	7	1	10	0	1	1	28
Harris	g	8	16	4	9	2	2	0	1	2	22	2	3	0	1	37
Artis	g	3	10	0	5	5	6	0	5	5	4	11	12	2	0	36
Barnes	g	0	0	0	0	0	0	0	0	0	0	0	0	0	0	2
Venegas	g	0	0	0	0	0	0	0	0	0	0	0	0	0	0	5
Touchet	g	0	4	0	4	2	2	0	2	0	2	3	0	0	0	

15 DOMINIC ARTIS

GUARD • 6-3 • 190 • SR-1L • SAN FRANCISCO, CALIF. (FINDLAY PREP/OREGON)



2016-17 Notes: Career totals are 868 points, 334 rebounds, 391 assists and 127 steals ... leads the Miners in rebounding (6.3 rpg), assists (8.4 apg), steals (2.7 spg) and minutes (36.1 mpg) and ranks second in scoring (14.8 ppg) ... shooting 41.4 percent from the field, 27 percent from outside and 60.8 percent from the line ... posted a near-triple double in the opener versus Louisiana College with eight points, nine rebounds, 13 assists and four steals ... the 13 assists were a career high and tied for the third-top total in UTEP history ... led the Miners with 24 points (8-for-12 FGs, 3-for-5 3FGs, 5-for-8 FTs) along with six assists against Wake Forest ... came within one assist of a triple-double versus Western Michigan with 20 points, 10 rebounds, nine assists and two steals ... shot a career-high 14 free throws against the Broncos ... scored 15 points with two steals versus Mississippi State ... matched his season best with four steals against Southeastern Louisiana ... filled up the stat sheet once again versus Northwestern State (16 points, nine rebounds, seven assists) ... scored 13 points with 12 assists and five steals at New Mexico

... tallied 15 points, five rebounds, nine assists and three steals against NM State ... turned in 11 points, 12 assists and three steals versus Northern Arizona.

2016-17 GAME-BY-GAME

Opponent	FG	Pct.	3FG	Pct.	FT	Pct.	O-D-R	PF	A	TO	B	S	PTS	MIN
N12 LA College [^]	3-8	.375	0-1	.000	2-2	1.000	2-7-9	5	13	5	0	4	8	28
N17 vs. Wake Forest ^{%^}	8-12	.667	3-5	.600	5-8	.625	0-4-4	1	6	6	0	0	24	35
N18 vs. Western Mich. ^{%^}	4-9	.444	2-6	.333	10-14	.714	0-10-10	3	9	4	0	2	20	38
N20 vs. Mississippi State ^{%^}	6-14	.429	1-6	.167	2-3	.667	1-4-5	4	3	1	0	2	15	39
N23 SE Louisiana [^]	5-16	.313	0-2	.000	1-4	.250	2-4-6	2	5	4	0	4	11	38
D3 Northwestern St. [^]	6-15	.400	1-5	.200	3-9	.333	1-8-9	2	7	7	0	1	16	37
D7 at New Mexico [^]	5-13	.385	3-5	.600	0-1	.000	1-3-4	3	12	3	0	5	13	38
D13 NM State [^]	6-14	.429	0-2	.000	3-4	.750	0-5-5	2	9	3	0	3	15	36
D17 Northern Arizona [^]	3-10	.300	0-5	.000	5-6	.833	0-5-5	4	12	2	0	3	11	36
D21 MD Eastern Shore+														
D22 TBD+														
D30 at NM State														
J1 at UTSA*														
J5 at LA Tech*														
J7 at Southern Miss*														
J12 FIU*														
J14 Florida Atlantic*														
J21 UTSA*														
J26 at WKU*														
J28 at Marshall*														
F2 UAB*														
F4 Middle Tennessee*														
F9 LA Tech*														
F11 Southern Miss*														
F16 at North Texas*														
F18 at Rice*														
F23 at Florida Atlantic*														
F25 at FIU*														
M2 Old Dominion*														
M4 Charlotte*														
M8 vs. TBD#														

[^] denotes starter | * Conference USA game | % Gildan Charleston Classic (Charleston, S.C.)
 + WestStar Bank Don Haskins Sun Bowl Invitational | # C-USA Championship (Birmingham, Ala.)

SEASON & CAREER HIGHS

Field Goals

Season: 8, Wake Forest (11-17-16)
 Career: 12, Marshall (2-4-16)

Field Goal Attempts

Season: 16, Southeastern Louisiana (11-23-16)
 Career: 23, at UTEP (12-19-12)

Three-Point Field Goals

Season: 3, two times, last at New Mexico (12-7-16)
 Career: 7, UTRGV (12-29-15)

Three-Point Field Goal Attempts

Season: 6, two times, last Mississippi State (11-20-16)
 Career: 10, UTRGV (12-29-15)

Free Throws

Season: 10, Western Michigan (11-18-16)
 Career: 10, Western Michigan (11-18-16)

Free Throw Attempts

Season: 14, Western Michigan (11-18-16)
 Career: 14, Western Michigan (11-18-16)

Rebounds

Season: 10, Western Michigan (11-18-16)
 Career: 12, Sam Houston State (12-22-15)

Assists

Season: 13, LA College (11-12-16)
 Career: 13, LA College (11-12-16)

Blocks

Season: N/A
 Career: 1, several times, last vs. FIU (3-9-16)

Steals

Season: 5, at New Mexico (12-7-16)
 Career: 5, two times, last at New Mexico (12-7-16)

Points

Season: 24, Wake Forest (11-17-16)
 Career: 33, Marshall (2-4-16)

Minutes Played

Season: 39, Mississippi State (11-20-16)
 Career: 45, at UTEP (12-19-12)

Miscellaneous Stats

Games with double figure points	45
Games with double figure rebounds	4
Double-doubles	6
Games playing 30+ minutes	39

5 CHRIS BARNES

GUARD • 6-4 • 190 • FR-HS • COMPTON, CALIF. (COMPTON HS)



2016-17 Notes: Has appeared in seven games with six points (0.9 ppg) and four rebounds (0.6 rpg) ... played 12 minutes in his Miner debut against Louisiana College, collecting two points and two rebounds ... scored two points in five minutes versus Wake Forest ... also put two points on the board against Northwestern State.

SEASON & CAREER HIGHS

Field Goals

Season: 1, three times, last Northwestern State (12-3-16)
 Career: 1, three times, last Northwestern State (12-3-16)

Field Goal Attempts

Season: 2, four times, last Northwestern State (12-3-16)
 Career: 2, four times, last Northwestern State (12-3-16)

Three-Point Field Goals

Season: N/A
 Career: N/A

Three-Point Field Goal Attempts

Season: 1, two times, last Northwestern State (12-3-16)
 Career: 1, two times, last Northwestern State (12-3-16)

Free Throws

Season: N/A
 Career: N/A

Free Throw Attempts

Season: N/A
 Career: N/A

Rebounds

Season: 2, LA College (11-12-16)
 Career: 2, LA College (11-12-16)

Assists

Season: 1, Northwestern State (12-3-16)
 Career: 1, Northwestern State (12-3-16)

Blocks

Season: N/A
 Career: N/A

Steals

Season: 1, Southeastern Louisiana (11-23-16)
 Career: 1, Southeastern Louisiana (11-23-16)

Points

Season: 2, three times, last Northwestern State (12-3-16)
 Career: 2, three times, last Northwestern State (12-3-16)

Minutes Played

Season: 12, LA College (11-12-16)
 Career: 12, LA College (11-12-16)

Miscellaneous Stats

Games with double figure points 0
 Games with double figure rebounds 0
 Double-doubles 0
 Games playing 30+ minutes 0

2016-17 GAME-BY-GAME

Opponent	FG	Pct.	3FG	Pct.	FT	Pct.	O-D-R	PF	A	TO	B	S	PTS	MIN
N12 LA College	1-2	.500	0-1	.000	0-1	.000	0-2-2	1	0	1	0	0	2	12
N17 vs. Wake Forest%	1-2	.000	0-0	.000	0-0	.000	1-0-1	0	0	1	0	0	2	5
N18 vs. Western Mich.%							-DNP-							
N20 vs. Mississippi State%							-DNP-							
N23 SE Louisiana	0-2	.000	0-0	.000	0-0	.000	0-0-0	0	0	0	0	1	0	3
D3 Northwestern St.	1-2	.500	0-1	.000	0-0	.000	0-1-1	3	1	1	0	0	2	11
D7 at New Mexico	0-0	.000	0-0	.000	0-0	.000	0-0-0	0	0	0	0	0	0	1
D13 NM State	0-0	.000	0-0	.000	0-0	.000	0-0-0	0	0	0	0	0	0	1
D17 Northern Arizona	0-0	.000	0-0	.000	0-0	.000	0-0-0	0	0	0	0	0	0	2
D21 MD Eastern Shore+														
D22 TBD+														
D30 at NM State														
J1 at UTSA*														
J5 at LA Tech*														
J7 at Southern Miss*														
J12 FIU*														
J14 Florida Atlantic*														
J21 UTSA*														
J26 at WKU*														
J28 at Marshall*														
F2 UAB*														
F4 Middle Tennessee*														
F9 LA Tech*														
F11 Southern Miss*														
F16 at North Texas*														
F18 at Rice*														
F23 at Florida Atlantic*														
F25 at FIU*														
M2 Old Dominion*														
M4 Charlotte*														
M8 vs. TBD#														

^ denotes starter | * Conference USA game | % Gildan Charleston Classic (Charleston, S.C.)
 + WestStar Bank Don Haskins Sun Bowl Invitational | # C-USA Championship (Birmingham, Ala.)

23 DEON BARRETT

GUARD • 5-10 • 150 • FR-HS • LANCASTER, TEXAS (LANCASTER HS)



2016-17 Notes: Has been a key rotation player as a freshman with 171 minutes (19.0 avg.) in nine games ... averaging 7.2 points and 1.9 assists ... shooting 47.8 percent from the field, a team-leading 50 percent from beyond the arc and 83.3 percent from the charity stripe ... assist/turnover ratio is 2.1 (17-8) ... dished out six assists with only one turnover and scored six points in his first game for UTEP against Louisiana College ... scored eight points in 24 minutes versus Wake Forest ... made his first career start against Southeastern Louisiana ... scored all eight of his points over 10 second-half minutes versus Northwestern State ... had a huge second half at New Mexico, scoring all 25 of his points (8-for-9 FGs, 7-for-8 3FGs, 2-for-2 FTs) with two rebounds and three assists in only 17 minutes ... put seven points on the board in a season-high 30 minutes against NM State ... scored eight points versus Northern Arizona.

SEASON & CAREER HIGHS

Field Goals

Season: 8, at New Mexico (12-7-16)

Career: 8, at New Mexico (12-7-16)

Field Goal Attempts

Season: 9, two times, last Northern Arizona (12-17-16)

Career: 9, two times, last Northern Arizona (12-17-16)

Three-Point Field Goals

Season: 7, at New Mexico (12-7-16)

Career: 7, at New Mexico (12-7-16)

Three-Point Field Goal Attempts

Season: 8, at New Mexico (12-7-16)

Career: 8, at New Mexico (12-7-16)

Free Throws

Season: 3, LA College (11-12-16)

Career: 3, LA College (11-12-16)

Free Throw Attempts

Season: 4, LA College (11-12-16)

Career: 4, LA College (11-12-16)

Rebounds

Season: 2, at New Mexico (12-7-16)

Career: 2, at New Mexico (12-7-16)

Assists

Season: 6, LA College (11-12-16)

Career: 6, LA College (11-12-16)

Blocks

Season: N/A

Career: N/A

Steals

Season: 1, two times, last Northern Arizona (12-17-16)

Career: 1, two times, last Northern Arizona (12-17-16)

Points

Season: 25, at New Mexico (12-7-16)

Career: 25, at New Mexico (12-7-16)

Minutes Played

Season: 30, NM State (12-13-16)

Career: 30, NM State (12-13-16)

Miscellaneous Stats

Games with double figure points	1
Games with double figure rebounds	0
Double-doubles	0
Games playing 30+ minutes	1

2016-17 GAME-BY-GAME

Opponent	FG	Pct.	3FG	Pct.	FT	Pct.	O-D-R	PF	A	TO	B	S	PTS	MIN
N12 LA College	1-3	.333	1-2	.500	3-4	.750	0-1-1	0	6	1	0	1	6	15
N17 vs. Wake Forest%	3-5	.600	2-4	.500	0-0	.000	0-0-0	1	2	1	0	0	8	24
N18 vs. Western Mich.%	1-4	.250	1-3	.333	0-0	.000	0-1-1	0	0	2	0	0	3	10
N20 vs. Mississippi State%	0-1	.000	0-1	.000	0-0	.000	0-0-0	0	0	0	0	0	0	16
N23 SE Louisiana^	0-2	.000	0-0	.000	0-0	.000	1-0-1	0	2	0	0	0	0	12
D3 Northwestern St.	3-6	.500	2-5	.400	0-0	.000	0-1-1	2	1	0	0	0	8	20
D7 at New Mexico	8-9	.889	7-8	.875	2-2	1.000	1-1-2	1	3	0	0	0	25	19
D13 NM State^	3-7	.429	1-3	.333	0-0	.000	0-1-1	1	1	2	0	0	7	30
D17 Northern Arizona	3-9	.333	2-6	.333	0-0	.000	0-1-1	1	2	2	0	1	8	25
D21 MD Eastern Shore+														
D22 TBD+														
D30 at NM State														
J1 at UTSA*														
J5 at LA Tech*														
J7 at Southern Miss*														
J12 FIU*														
J14 Florida Atlantic*														
J21 UTSA*														
J26 at WKU*														
J28 at Marshall*														
F2 UAB*														
F4 Middle Tennessee*														
F9 LA Tech*														
F11 Southern Miss*														
F16 at North Texas*														
F18 at Rice*														
F23 at Florida Atlantic*														
F25 at FIU*														
M2 Old Dominion*														
M4 Charlotte*														
M8 vs. TBD#														

^ denotes starter | * Conference USA game | % Gildan Charleston Classic (Charleston, S.C.)

+ WestStar Bank Don Haskins Sun Bowl Invitational | # C-USA Championship (Birmingham, Ala.)

3 TIM CAMERON

GUARD • 6-4 • 180 • FR-HS • NORCROSS, GA. (HARGRAVE MILITARY ACADEMY)



2016-17 Notes: Hit a three-pointer and pulled down three rebounds in six minutes versus Louisiana College ... gave the Miners a spark late in the NM State game with a couple of three-point plays.

SEASON & CAREER HIGHS

Field Goals

Season: 2, NM State (12-13-16)

Career: 2, NM State (12-13-16)

Field Goal Attempts

Season: 3, two times, last NM State (12-13-16)

Career: 3, two times, last NM State (12-13-16)

Three-Point Field Goals

Season: 1, LA College (11-12-16)

Career: 1, LA College (11-12-16)

Three-Point Field Goal Attempts

Season: 1, two times, last NM State (12-13-16)

Career: 1, two times, last NM State (12-13-16)

Free Throws

Season: 2, NM State (12-13-16)

Career: 2, NM State (12-13-16)

Free Throw Attempts

Season: 3, NM State (12-13-16)

Career: 3, NM State (12-13-16)

Rebounds

Season: 3, LA College (11-12-16)

Career: 3, LA College (11-12-16)

Assists

Season: N/A

Career: N/A

Blocks

Season: N/A

Career: N/A

Steals

Season: N/A

Career: N/A

Points

Season: 6 NM State (12-13-16)

Career: 6, NM State (12-13-16)

Minutes Played

Season: 6, LA College (11-12-16)

Career: 6, LA College (11-12-16)

Miscellaneous Stats

Games with double figure points	0
Games with double figure rebounds	0
Double-doubles	0
Games playing 30+ minutes	0

2016-17 GAME-BY-GAME

Opponent	FG	Pct.	3FG	Pct.	FT	Pct.	O-D-R	PF	A	TO	B	S	PTS	MIN
N12 LA College	1-3	.333	1-1	1.000	0-0	.000	1-2-3	1	0	1	0	0	3	6
N17 vs. Wake Forest%							-DNP-							
N18 vs. Western Mich.%							-DNP-							
N20 vs. Mississippi State%							-DNP-							
N23 SE Louisiana	0-0	.000	0-0	.000	0-0	.000	0-0-0	0	0	0	0	0	0	1
D3 Northwestern St.	0-0	.000	0-0	.000	0-0	.000	0-0-0	0	0	0	0	0	0	1
D7 at New Mexico							-DNP-							
D13 NM State	2-3	.667	0-1	.000	2-3	.667	1-0-1	1	0	0	0	0	6	5
D17 Northern Arizona							-DNP-							
D21 MD Eastern Shore+														
D22 TBD+														
D30 at NM State														
J1 at UTSA*														
J5 at LA Tech*														
J7 at Southern Miss*														
J12 FIU*														
J14 Florida Atlantic*														
J21 UTSA*														
J26 at WKU*														
J28 at Marshall*														
F2 UAB*														
F4 Middle Tennessee*														
F9 LA Tech*														
F11 Southern Miss*														
F16 at North Texas*														
F18 at Rice*														
F23 at Florida Atlantic*														
F25 at FIU*														
M2 Old Dominion*														
M4 Charlotte*														
M8 vs. TBD#														

^ denotes starter | * Conference USA game | % Gildan Charleston Classic (Charleston, S.C.)

+ WestStar Bank Don Haskins Sun Bowl Invitational | # C-USA Championship (Birmingham, Ala.)

11 JAKE FLAGGERT

FORWARD • 6-7 • 200 • JR-2L • LUCAS, TEXAS (LOVEJOY HS)



2016-17 Notes: Has taken a total of 31 charges in his career, including a Conference USA-leading 18 in 2015-16 ... leads the Miners once again with seven charges drawn in 2016-17 ... has started seven games, averaging 6.8 points and 2.6 rebounds ... shooting 41.9 percent from the floor, 42.1 percent from three-point territory and is perfect (9-for-9) from the line ... 38 of his 43 shot attempts have come from outside the three-point line ... finished with five points, four rebounds, two assists, a block and three charges drawn in the opener versus Louisiana College ... broke out against Western Michigan with 13 points, making 4-of-5 three pointers ... played his career-most 35 minutes versus the Broncos ... saw 33 more minutes of court time against Mississippi State with three points, four rebounds and a career-high three assists ... came off the bench for the first time this season versus Southeastern Louisiana and hit a couple of three-pointers with three rebounds ... returned to the starting lineup and produced 14 points against Northwestern State ... tied his career-best with three assists at New Mexico ... blocked a career-high two

shots versus NM State ... posted his top-scoring game as a Miner against Northern Arizona with 15 points ... made his UTEP-best five three-point field goals versus the Lumberjacks.

SEASON & CAREER HIGHS

Field Goals

Season: 5, Northern Arizona (12-17-16)

Career: 5, Northern Arizona (12-17-16)

Field Goal Attempts

Season: 9, Northwestern State (12-3-16)

Career: 9, Northwestern State (12-3-16)

Three-Point Field Goals

Season: 5, Northern Arizona (12-17-16)

Career: 5, Northern Arizona (12-17-16)

Three-Point Field Goal Attempts

Season: 8, Mississippi State (11-20-16)

Career: 8, Mississippi State (11-20-16)

Free Throws

Season: 4, Northwestern State (12-3-16)

Career: 4, Northwestern State (12-3-16)

Free Throw Attempts

Season: 4, Northwestern State (12-3-16)

Career: 4, three times, last Northwestern State (12-3-16)

Rebounds

Season: 4, two times, last Mississippi State (11-20-16)

Career: 5, two times, last at NM State (12-2-15)

Assists

Season: 3, two times, last at New Mexico (12-7-16)

Career: 3, two times, last at New Mexico (12-7-16)

Blocks

Season: 2, NM State (12-13-16)

Career: 2, NM State (12-13-16)

Steals

Season: 1, four times, last Northern Arizona (12-17-16)

Career: 2, two times, last Loyola (11-14-15)

Points

Season: 15, Northern Arizona (12-17-16)

Career: 15, Northern Arizona (12-17-16)

Minutes Played

Season: 35, Western Michigan (11-18-16)

Career: 35, Western Michigan (11-18-16)

Miscellaneous Stats

Games with double figure points 4

Games with double figure rebounds 0

Double-doubles 0

Games playing 30+ minutes 3

2016-17 GAME-BY-GAME

Opponent	FG	Pct.	3FG	Pct.	FT	Pct.	O-D-R	PF	A	TO	B	S	PTS	MIN
N12 LA College [^]	1-4	.250	1-3	.333	2-2	1.000	2-2-4	1	2	2	1	0	5	25
N17 vs. Wake Forest ^{%^}	0-0	.000	0-0	.000	2-2	1.000	1-0-1	4	0	0	0	0	2	16
N18 vs. Western Mich. ^{%^}	4-6	.667	4-5	.800	1-1	1.000	0-2-2	2	0	2	1	0	13	35
N20 vs. Mississippi State ^{%^1-8}	1-8	.125	1-8	.125	0-0	.000	2-2-4	3	3	3	0	0	3	33
N23 SE Louisiana	2-4	.500	2-4	.500	0-0	.000	0-3-3	5	1	0	1	1	6	28
D3 Northwestern St. [^]	4-9	.444	2-7	.286	4-4	1.000	0-2-2	5	0	0	0	1	14	27
D7 at New Mexico [^]	0-2	.000	0-1	.000	0-0	.000	0-1-1	5	3	1	0	1	0	22
D13 NM State	1-3	.333	1-3	.333	0-0	.000	1-2-3	5	0	2	2	0	3	21
D17 Northern Arizona [^]	5-7	.714	5-7	.714	0-0	.000	0-3-3	4	1	0	0	1	15	34
D21 MD Eastern Shore+														
D22 TBD+														
D30 at NM State														
J1 at UTSA*														
J5 at LA Tech*														
J7 at Southern Miss*														
J12 FIU*														
J14 Florida Atlantic*														
J21 UTSA*														
J26 at WKU*														
J28 at Marshall*														
F2 UAB*														
F4 Middle Tennessee*														
F9 LA Tech*														
F11 Southern Miss*														
F16 at North Texas*														
F18 at Rice*														
F23 at Florida Atlantic*														
F25 at FIU*														
M2 Old Dominion*														
M4 Charlotte*														
M8 vs. TBD#														

[^] denotes starter | * Conference USA game | % Gildan Charleston Classic (Charleston, S.C.)

+ WestStar Bank Don Haskins Sun Bowl Invitational | # C-USA Championship (Birmingham, Ala.)

2 OMEGA HARRIS

GUARD • 6-3 • 165 • JR-2L • BETHANY, OKLA. (PUTNAM CITY WEST HS)



2016-17 Notes: Leads the Miners in scoring (17.5 ppg) while also averaging 2.4 rebounds, 1.6 assists and 1.6 steals ... has a .480 field goal percentage, .378 three-point percentage and .844 free throw percentage ... established career-highs for field goals made (nine) and points (24) in the opener against Louisiana College ... made 9-of-14 shots and 4-of-6 threes in a team-high 29 minutes ... added 16 points (6-for-6 FTs) and three steals versus Wake Forest ... went 6-for-7 from the charity stripe, part of a 17-point, four-assist effort against Western Michigan ... recorded three steals versus Southeastern Louisiana ... suspended for the Northwestern State game ... returned to the lineup and scored 22 points with four three-pointers at New Mexico ... duplicated his career-best with two blocks against the Lobos ... led the Miners with 18 points and three steals against NM State ... scored 17 of his 22 points in the second half versus Northern Arizona.

SEASON & CAREER HIGHS

Field Goals

Season: 9, LA College (11-12-16)
 Career: 9, LA College (11-12-16)

Field Goal Attempts

Season: 16, two times, last Northern Arizona (12-17-16)
 Career: 16, two times, last Northern Arizona (12-17-16)

Three-Point Field Goals

Season: 4, three times, last Northern Arizona (12-17-16)
 Career: 5, two times, last at FIU (2-11-16)

Three-Point Field Goal Attempts

Season: 10, at New Mexico (12-7-16)
 Career: 10, at New Mexico (12-7-16)

Free Throws

Season: 6, two times, last Western Michigan (11-18-16)
 Career: 6, four times, last Western Michigan (11-18-16)

Free Throw Attempts

Season: 7, Western Michigan (11-18-16)
 Career: 8, NM State (12-19-15)

Rebounds

Season: 4, Mississippi State (11-20-16)
 Career: 6, two times, last at Florida Atlantic (2-13-16)

Assists

Season: 4, Western Michigan (11-18-16)
 Career: 5, two times, last Sam Houston State (12-22-15)

Blocks

Season: 2, at New Mexico (12-7-16)
 Career: 2, two times, last at New Mexico (12-7-16)

Steals

Season: 3, three times, last NM State (12-13-16)
 Career: 4, two times, last at Florida Atlantic (2-5-15)

Points

Season: 24, LA College (11-12-16)
 Career: 24, LA College (11-12-16)

Minutes Played

Season: 38, two times, last NM State (12-13-16)
 Career: 39, at Florida Atlantic (2-13-16)

Miscellaneous Stats

Games with double figure points 32
 Games with double figure rebounds 0
 Double-doubles 0
 Games playing 30+ minutes 34

2016-17 GAME-BY-GAME

Opponent	FG	Pct.	3FG	Pct.	FT	Pct.	O-D-R	PF	A	TO	B	S	PTS	MIN
N12 LA College [^]	9-14	.643	4-6	.667	2-2	1.000	0-2-2	1	2	2	0	1	24	29
N17 vs. Wake Forest% [^]	5-12	.417	0-4	.000	6-6	1.000	0-2-2	2	2	3	0	3	16	32
N18 vs. Western Mich.% [^]	5-10	.500	1-5	.200	6-7	.857	0-3-3	4	4	1	1	0	17	37
N20 vs. Mississippi State% [^]	3-9	.333	1-4	.250	1-2	.500	1-3-4	2	1	2	0	0	8	30
N23 SE Louisiana [^]	5-11	.455	1-3	.333	2-3	.667	0-2-2	2	1	3	1	3	13	35
D3 Northwestern St.							-DNP-							
D7 at New Mexico [^]	7-16	.438	4-10	.400	4-4	1.000	0-3-3	3	1	0	2	2	22	38
D13 NM State [^]	6-12	.500	2-4	.500	4-6	.667	0-2-2	2	0	2	0	3	18	38
D17 Northern Arizona [^]	8-16	.500	4-9	.444	2-2	1.000	0-1-1	2	2	3	0	1	22	37
D21 MD Eastern Shore+														
D22 TBD+														
D30 at NM State														
J1 at UTSA*														
J5 at LA Tech*														
J7 at Southern Miss*														
J12 FIU*														
J14 Florida Atlantic*														
J21 UTSA*														
J26 at WKU*														
J28 at Marshall*														
F2 UAB*														
F4 Middle Tennessee*														
F9 LA Tech*														
F11 Southern Miss*														
F16 at North Texas*														
F18 at Rice*														
F23 at Florida Atlantic*														
F25 at FIU*														
M2 Old Dominion*														
M4 Charlotte*														
M8 vs. TBD#														

[^] denotes starter | * Conference USA game | % Gildan Charleston Classic (Charleston, S.C.)
 + WestStar Bank Don Haskins Sun Bowl Invitational | # C-USA Championship (Birmingham, Ala.)

54 KELVIN JONES

CENTER • 6-11 • 230 • FR-HS • CHIHUAHUA, MEXICO (HOBBS [N.M.] HS)



2016-17 Notes: Has made nine appearances and averaged 4.1 ppg, 3.7 rpg and 1.2 bpg ... shooting 51.5 percent from the field ... made his Miner debut in a reserve role versus Louisiana College with six points and three rebounds in 11 minutes ... collected four points, two assists and two blocks in 13 minutes against Wake Forest ... added four points versus Mississippi State ... started for the first time against Southeastern Louisiana and pulled down five rebounds ... blocked a couple of shots versus Northwestern State ... contributed four points, six rebounds and two blocks in 20 minutes at New Mexico ... had his top game to date against NM State with seven points, eight rebounds and a block in 17 minutes ... pitched in with six points, five rebounds and two blocks over 14 minutes in a start versus Northern Arizona.

SEASON & CAREER HIGHS

Field Goals

Season: 3, three times, last Northern Arizona (12-17-16)

Career: 3, three times, last Northern Arizona (12-17-16)

Field Goal Attempts

Season: 7, LA College (11-12-16)

Career: 7, LA College (11-12-16)

Three-Point Field Goals

Season: N/A

Career: N/A

Three-Point Field Goal Attempts

Season: N/A

Career: N/A

Free Throws

Season: 2, Mississippi State (11-20-16)

Career: 2, Mississippi State (11-20-16)

Free Throw Attempts

Season: 3, two times, last NM State (12-13-16)

Career: 3, two times, last NM State (12-13-16)

Rebounds

Season: 8, NM State (12-13-16)

Career: 8, NM State (12-13-16)

Assists

Season: 2, Wake Forest (11-17-16)

Career: 2, Wake Forest (11-17-16)

Blocks

Season: 2, four times, last Northern Arizona (12-17-16)

Career: 2, four times, last Northern Arizona (12-17-16)

Steals

Season: N/A

Career: N/A

Points

Season: 7, NM State (12-13-16)

Career: 7, NM State (12-13-16)

Minutes Played

Season: 20, at New Mexico (12-7-16)

Career: 20, at New Mexico (12-7-16)

Miscellaneous Stats

Games with double figure points	0
Games with double figure rebounds	0
Double-doubles	0
Games playing 30+ minutes	0

2016-17 GAME-BY-GAME

Opponent	FG	Pct.	3FG	Pct.	FT	Pct.	O-D-R	PF	A	TO	B	S	PTS	MIN
N12 LA College	3-7	.429	0-0	.000	0-1	.000	1-2-3	4	0	1	0	0	6	11
N17 vs. Wake Forest%	2-3	.667	0-0	.000	0-0	.000	1-0-1	5	2	1	2	0	4	13
N18 vs. Western Mich.%	0-0	.000	0-0	.000	0-0	.000	1-0-1	1	0	0	1	0	0	7
N20 vs. Mississippi State%	1-1	1.000	0-0	.000	2-2	1.000	0-1-1	2	0	1	0	0	4	9
N23 SE Louisiana^	2-5	.400	0-0	.000	0-1	.000	5-0-5	3	0	2	1	0	4	17
D3 Northwestern St.	1-2	.500	0-0	.000	0-1	.000	2-1-3	5	0	2	2	0	2	17
D7 at New Mexico	2-4	.500	0-0	.000	0-3	.000	1-5-6	5	0	2	2	0	4	20
D13 NM State	3-6	.500	0-0	.000	1-3	.333	3-5-8	2	0	1	1	0	7	17
D17 Northern Arizona^	3-5	.600	0-0	.000	0-0	.000	2-3-5	5	1	1	2	0	6	14
D21 MD Eastern Shore+														
D22 TBD+														
D30 at NM State														
J1 at UTSA*														
J5 at LA Tech*														
J7 at Southern Miss*														
J12 FIU*														
J14 Florida Atlantic*														
J21 UTSA*														
J26 at WKU*														
J28 at Marshall*														
F2 UAB*														
F4 Middle Tennessee*														
F9 LA Tech*														
F11 Southern Miss*														
F16 at North Texas*														
F18 at Rice*														
F23 at Florida Atlantic*														
F25 at FIU*														
M2 Old Dominion*														
M4 Charlotte*														
M8 vs. TBD#														

^ denotes starter | * Conference USA game | % Gildan Charleston Classic (Charleston, S.C.)

+ WestStar Bank Don Haskins Sun Bowl Invitational | # C-USA Championship (Birmingham, Ala.)

5 PAUL THOMAS

FORWARD • 6-8 • 200 • SO-1L • HUMBLE, TEXAS (SUMMER CREEK HS)



2016-17 Notes: Averaging 3.6 points and 4.9 rebounds per game ... leads all UTEP big men with 14 assists ... has made six starts ... snared a UTEP-high 11 rebounds in only 14 minutes while starting against Louisiana College ... led the Miners in rebounding for the second straight game versus Wake Forest with five ... added a career-high five assists and eight points (4-for-4 FGs) against the Demon Deacons ... battled foul trouble versus Western Michigan and tallied five rebounds in 12 minutes ... played 24 minutes against Mississippi State with seven points and five boards ... earned a career-high 28 minutes of court time versus Southeastern Louisiana ... pulled down 10 rebounds against Northwestern State.

SEASON & CAREER HIGHS

Field Goals

Season: 4, Wake Forest (11-17-16)
 Career: 4, Wake Forest (11-17-16)

Field Goal Attempts

Season: 7, Mississippi State (11-20-16)
 Career: 7, Mississippi State (11-20-16)

Three-Point Field Goals

Season: N/A
 Career: N/A

Three-Point Field Goal Attempts

Season: 1, Northwestern State (12-3-16)
 Career: 1, Northwestern State (12-3-16)

Free Throws

Season: 4, Southeastern Louisiana (11-23-16)
 Career: 4, Southeastern Louisiana (11-23-16)

Free Throw Attempts

Season: 4, two times, last Southeastern Louisiana (11-23-16)
 Career: 4, two times, last Southeastern Louisiana (11-23-16)

Rebounds

Season: 11, LA College (11-12-16)
 Career: 11, LA College (11-12-16)

Assists

Season: 5, Wake Forest (11-17-16)
 Career: 5, Wake Forest (11-17-16)

Blocks

Season: 1, Mississippi State (11-20-16)
 Career: 3, Sam Houston State (12-22-15)

Steals

Season: 1, four times, last Northern Arizona (12-17-16)
 Career: 1, 10 times, last Northern Arizona (12-17-16)

Points

Season: 8, Wake Forest (11-17-16)
 Career: 8, Wake Forest (11-17-16)

Minutes Played

Season: 28, two times, last Northwestern State (12-3-16)
 Career: 28, two times, last Northwestern State (12-3-16)

Miscellaneous Stats

Games with double figure points 0
 Games with double figure rebounds 2
 Double-doubles 0
 Games playing 30+ minutes 0

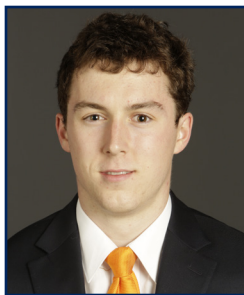
2016-17 GAME-BY-GAME

Opponent	FG	Pct.	3FG	Pct.	FT	Pct.	O-D-R	PF	A	TO	B	S	PTS	MIN
N12 LA College [^]	0-1	.000	0-0	.000	1-4	.250	0-11-11	2	3	2	0	1	1	14
N17 vs. Wake Forest%	4-4	1.000	0-0	.000	0-0	.000	2-3-5	1	5	0	0	0	8	26
N18 vs. Western Mich.% [^]	0-0	.000	0-0	.000	0-0	.000	1-4-5	5	1	1	0	0	0	12
N20 vs. Mississippi State% [^] 3-7		.429	0-0	.000	1-1	1.000	3-2-5	4	0	3	1	0	7	24
N23 SE Louisiana	0-5	.000	0-0	.000	4-4	1.000	3-3-6	2	1	2	0	1	4	28
D3 Northwestern St. [^]	1-6	.167	0-1	.000	0-3	.000	3-7-10	4	2	2	0	0	2	28
D7 at New Mexico [^]	3-4	.750	0-0	.000	0-0	.000	1-0-1	4	1	1	0	0	6	13
D13 NM State [^]	2-6	.333	0-0	.000	0-1	.000	0-1-1	3	1	3	0	1	4	18
D17 Northern Arizona	0-1	.000	0-0	.000	0-0	.000	0-0-0	0	0	0	0	1	0	3
D21 MD Eastern Shore+														
D22 TBD+														
D30 at NM State														
J1 at UTSA*														
J5 at LA Tech*														
J7 at Southern Miss*														
J12 FIU*														
J14 Florida Atlantic*														
J21 UTSA*														
J26 at WKU*														
J28 at Marshall*														
F2 UAB*														
F4 Middle Tennessee*														
F9 LA Tech*														
F11 Southern Miss*														
F16 at North Texas*														
F18 at Rice*														
F23 at Florida Atlantic*														
F25 at FIU*														
M2 Old Dominion*														
M4 Charlotte*														
M8 vs. TBD#														

[^] denotes starter | * Conference USA game | % Gildan Charleston Classic (Charleston, S.C.)
 + WestStar Bank Don Haskins Sun Bowl Invitational | # C-USA Championship (Birmingham, Ala.)

21 TREY TOUCHET

GUARD • 6-2 • 180 • SO-1L • LAFAYETTE, LA. (SAINT THOMAS MORE HS)



2016-17 Notes: Averaging 4.3 ppg ... shooting 38.7 percent from the field, 33.3 percent from outside and 87.5 percent from the line ... was perfect from the field (4-for-4) and scored nine points versus Louisiana College ... matched his UTEP best with two steals against Wake Forest ... scored five points with an assist in 17 minutes versus Mississippi State ... made two three-pointers against Southeastern Louisiana ... started for the first time this season versus Northwestern State and either set or matched career-highs for three-point field goals (three), free throws (four), rebounds (three), points (13) and minutes (30) ... dished out his career-best three assists against Northern Arizona.

SEASON & CAREER HIGHS

Field Goals

Season: 4, LA College (11-12-16)
 Career: 4, LA College (11-12-16)

Field Goal Attempts

Season: 7, Southeastern Louisiana (11-23-16)
 Career: 7, two times, last Southeastern Louisiana (11-23-16)

Three-Point Field Goals

Season: 3, Northwestern State (12-3-16)
 Career: 3, Northwestern State (12-3-16)

Three-Point Field Goal Attempts

Season: 7, Southeastern Louisiana (11-23-16)
 Career: 7, Southeastern Louisiana (11-23-16)

Free Throws

Season: 4, Northwestern State (12-3-16)
 Career: 4, two times, last Northwestern State (12-3-16)

Free Throw Attempts

Season: 4, Northwestern State (12-3-16)
 Career: 4, two times, last Northwestern State (12-3-16)

Rebounds

Season: 3, Northwestern State (12-3-16)
 Career: 3, three times, last Northwestern State (12-3-16)

Assists

Season: 3, Northern Arizona (12-17-16)
 Career: 3, Northern Arizona (12-17-16)

Blocks

Season: N/A
 Career: 1, two times, last vs. Southern Illinois (11-27-15)

Steals

Season: 2, Wake Forest (11-17-16)
 Career: 2, two times, last Wake Forest (11-17-16)

Points

Season: 13, Northwestern State (12-3-16)
 Career: 13, Northwestern State (12-3-16)

Minutes Played

Season: 30, Northwestern State (12-3-16)
 Career: 30, Northwestern State (12-3-16)

Miscellaneous Stats

Games with double figure points	1
Games with double figure rebounds	0
Double-doubles	0
Games playing 30+ minutes	1

2016-17 GAME-BY-GAME

Opponent	FG	Pct.	3FG	Pct.	FT	Pct.	O-D-R	PF	A	TO	B	S	PTS	MIN
N12 LA College	4-4	1.000	1-1	1.000	0-0	.000	0-2-2	3	2	4	0	0	9	18
N17 vs. Wake Forest%	0-1	.000	0-0	.000	0-0	.000	0-0-0	0	0	1	0	2	0	10
N18 vs. Western Mich.%	0-0	.000	0-0	.000	0-0	.000	0-0-0	0	0	1	0	0	0	3
N20 vs. Mississippi State%	2-4	.500	1-3	.333	0-0	.000	0-1-1	1	1	1	0	0	5	17
N23 SE Louisiana	2-7	.286	2-7	.286	0-0	.000	0-0-0	0	1	1	0	0	6	11
D3 Northwestern St. ^	3-4	.750	3-4	.750	4-4	1.000	0-3-3	3	2	2	0	1	13	30
D7 at New Mexico	1-6	.167	1-5	.200	1-2	.500	0-2-2	0	0	2	0	1	4	15
D13 NM State	0-1	.000	0-0	.000	0-0	.000	0-1-1	0	1	1	0	1	0	11
D17 Northern Arizona	0-4	.000	0-4	.000	2-2	1.000	2-0-2	0	3	0	0	0	2	16
D21 MD Eastern Shore+														
D22 TBD+														
D30 at NM State														
J1 at UTSA*														
J5 at LA Tech*														
J7 at Southern Miss*														
J12 FIU*														
J14 Florida Atlantic*														
J21 UTSA*														
J26 at WKU*														
J28 at Marshall*														
F2 UAB*														
F4 Middle Tennessee*														
F9 LA Tech*														
F11 Southern Miss*														
F16 at North Texas*														
F18 at Rice*														
F23 at Florida Atlantic*														
F25 at FIU*														
M2 Old Dominion*														
M4 Charlotte*														
M8 vs. TBD#														

^ denotes starter | * Conference USA game | % Gildan Charleston Classic (Charleston, S.C.)
 + WestStar Bank Don Haskins Sun Bowl Invitational | # C-USA Championship (Birmingham, Ala.)

13 IVAN VENEGAS

FORWARD • 6-8 • 220 • SO-OL • CHIHUAHUA, MEXICO (TECNOLOGICO DE MONTERREY



2016-17 Notes: Played four minutes against Louisiana College, two versus Wake Forest, one against Southeastern Louisiana, two versus Northwestern State, three at New Mexico and five against Northern Arizona ... scored his first points of the season against Northwestern State ... added a bucket at New Mexico.

SEASON & CAREER HIGHS

Field Goals

Season: 1, two times, last at New Mexico (12-7-16)
 Career: 1, three times, last at New Mexico (12-7-16)

Field Goal Attempts

Season: 2, Wake Forest (11-17-16)
 Career: 3, Loyola (11-14-15)

Three-Point Field Goals

Season: N/A
 Career: N/A

Three-Point Field Goal Attempts

Season: N/A
 Career: N/A

Free Throws

Season: N/A
 Career: 2, Loyola (11-14-15)

Free Throw Attempts

Season: N/A
 Career: 4, Loyola (11-14-15)

Rebounds

Season: 1, three times, last at New Mexico (12-7-16)
 Career: 4, Loyola (11-14-15)

Assists

Season: N/A
 Career: 1, at UAB (1-9-16)

Blocks

Season: N/A
 Career: 1, UTRGV (12-29-15)

Steals

Season: N/A
 Career: N/A

Points

Season: 3, at New Mexico (12-7-16)
 Career: 4, Loyola (11-14-15)

Minutes Played

Season: 4, LA College (11-12-16)
 Career: 4, three times, last LA College (11-12-16)

Miscellaneous Stats

Games with double figure points 0
 Games with double figure rebounds 0
 Double-doubles 0
 Games playing 30+ minutes 0

2016-17 GAME-BY-GAME

Opponent	FG	Pct.	3FG	Pct.	FT	Pct.	O-D-R	PF	A	TO	B	S	PTS	MIN
N12 LA College	0-1	.000	0-0	.000	0-0	.000	0-1-1	1	0	1	0	0	0	4
N17 vs. Wake Forest%	0-2	.000	0-0	.000	0-0	.000	0-0-0	0	0	0	0	0	0	2
N18 vs. Western Mich.%							-DNP-							
N20 vs. Mississippi State%							-DNP-							
N23 SE Louisiana	0-0	.000	0-0	.000	0-0	.000	0-1-1	0	0	0	0	0	0	1
D3 Northwestern St.	1-1	1.000	0-0	.000	0-0	.000	0-0-0	0	0	0	0	0	2	2
D7 at New Mexico	1-1	1.000	0-0	.000	0-0	.000	1-0-1	0	0	0	0	0	2	3
D13 NM State							-DNP-							
D17 Northern Arizona	0-0	.000	0-0	.000	0-0	.000	0-0-0	0	0	1	0	0	0	5
D21 MD Eastern Shore+														
D22 TBD+														
D30 at NM State														
J1 at UTSA*														
J5 at LA Tech*														
J7 at Southern Miss*														
J12 FIU*														
J14 Florida Atlantic*														
J21 UTSA*														
J26 at WKU*														
J28 at Marshall*														
F2 UAB*														
F4 Middle Tennessee*														
F9 LA Tech*														
F11 Southern Miss*														
F16 at North Texas*														
F18 at Rice*														
F23 at Florida Atlantic*														
F25 at FIU*														
M2 Old Dominion*														
M4 Charlotte*														
M8 vs. TBD#														

^ denotes starter | * Conference USA game | % Gildan Charleston Classic (Charleston, S.C.)
 + WestStar Bank Don Haskins Sun Bowl Invitational | # C-USA Championship (Birmingham, Ala.)

41 MATT WILLMS

CENTER • 7-1 • 235 • JR-2L • LEAMINGTON, ONTARIO, CANADA (FINDLAY PREP)



2016-17 Notes: Has 70 career blocks, ranking 12th in school history ... averaging 10.6 points, 5.2 rebounds and 1.3 blocks this season ... shooting a team-high 60.9 percent from the floor ... has started eight games ... made a successful return to the court in the season opener versus Louisiana College, registering nine points (4-for-4 FGs) and four rebounds in 12 first-half minutes ... connected on 6-of-8 shots and scored 13 points with five blocks against Wake Forest ... established career-bests for field goals made (nine) and points (22) versus Western Michigan ... added seven rebounds, two assists and two blocks against the Broncos ... set a career-best for minutes (32) versus Mississippi State ... also achieved his first career double-double against the Bulldogs with 12 points and 11 rebounds ... went to the line a career-high 12 times versus Mississippi State ... scored 12 points against Southeastern Louisiana ... had a productive first half versus Northwestern State (eight points, 4-for-6 FGs), but missed most of the second half after breaking his nose ... ditched his protective mask and scored eight points with six rebounds against NM State ... accumulated 10 points and seven boards versus Northern Arizona.

State ... accumulated 10 points and seven boards versus Northern Arizona.

SEASON & CAREER HIGHS

Field Goals

Season: 9, Western Michigan (11-18-16)

Career: 9, Western Michigan (11-18-16)

Field Goal Attempts

Season: 11, two times, last Southeastern Louisiana (11-23-16)

Career: 13, Loyola (11-9-13)

Three-Point Field Goals

Season: N/A

Career: N/A

Three-Point Field Goal Attempts

Season: N/A

Career: N/A

Free Throws

Season: 6, Mississippi State (11-20-16)

Career: 6, three times, last Mississippi State (11-20-16)

Free Throw Attempts

Season: 12, Mississippi State (11-20-16)

Career: 12, Mississippi State (11-20-16)

Rebounds

Season: 11, Mississippi State (11-20-16)

Career: 11, Mississippi State (11-20-16)

Assists

Season: 2, four times, last at New Mexico (12-7-16)

Career: 4, SE Louisiana (12-16-14)

Blocks

Season: 5, Wake Forest (11-17-16)

Career: 5, Wake Forest (11-17-16)

Steals

Season: 1, Northern Arizona (12-17-16)

Career: 4, Florida Atlantic (2-13-14)

Points

Season: 22, Western Michigan (11-18-16)

Career: 22, Western Michigan (11-18-16)

Minutes Played

Season: 32, Mississippi State (11-20-16)

Career: 32, Mississippi State (11-20-16)

Miscellaneous Stats

Games with double figure points 13

Games with double figure rebounds 1

Double-doubles 1

Games playing 30+ minutes 2

2016-17 GAME-BY-GAME

Opponent	FG	Pct.	3FG	Pct.	FT	Pct.	O-D-R	PF	A	TO	B	S	PTS	MIN
N12 LA College	4-4	1.000	0-0	.000	1-1	1.000	0-4-4	0	0	2	0	0	9	12
N17 vs. Wake Forest% [^]	6-8	.750	0-0	.000	1-3	.333	1-1-2	4	0	3	5	0	13	20
N18 vs. Western Mich.% [^]	9-11	.818	0-0	.000	4-6	.667	3-4-7	4	2	2	2	0	22	29
N20 vs. Mississippi State% [^]	3-7	.429	0-0	.000	6-12	.500	2-9-11	2	2	0	1	0	12	32
N23 SE Louisiana [^]	5-11	.455	0-0	.000	2-5	.400	1-2-3	2	2	0	0	0	12	25
D3 Northwestern St. [^]	4-7	.571	0-0	.000	0-0	.000	2-1-3	2	0	1	1	0	8	19
D7 at New Mexico [^]	0-3	.000	0-0	.000	1-2	.500	2-2-4	3	2	3	2	0	1	31
D13 NM State [^]	3-6	.500	0-0	.000	2-3	.667	2-4-6	4	0	2	0	0	8	23
D17 Northern Arizona [^]	5-7	.714	0-0	.000	0-0	.000	1-6-7	1	0	1	1	0	10	28
D21 MD Eastern Shore+														
D22 TBD+														
D30 at NM State														
J1 at UTSA*														
J5 at LA Tech*														
J7 at Southern Miss*														
J12 FIU*														
J14 Florida Atlantic*														
J21 UTSA*														
J26 at WKU*														
J28 at Marshall*														
F2 UAB*														
F4 Middle Tennessee*														
F9 LA Tech*														
F11 Southern Miss*														
F16 at North Texas*														
F18 at Rice*														
F23 at Florida Atlantic*														
F25 at FIU*														
M2 Old Dominion*														
M4 Charlotte*														
M8 vs. TBD#														

[^] denotes starter | * Conference USA game | % Gildan Charleston Classic (Charleston, S.C.)

+ WestStar Bank Don Haskins Sun Bowl Invitational | # C-USA Championship (Birmingham, Ala.)

2016-17 UTEP STATISTICS

RECORD:	OVERALL	HOME	AWAY	NEUTRAL
ALL GAMES	2-7	1-4	0-1	1-2
CONFERENCE	0-0	0-0	0-0	0-0
NON-CONFERENCE	2-7	1-4	0-1	1-2

#	Player	gp-gs	min	avg	Total		3-Point		F-Throw		Rebounds				a	to	blk	stl	pts	avg		
					fg-fga	fg%	3fg-fga	3fg%	ft-fa	ft%	off	def	tot	avg							pf	dq
02	HARRIS, Omega	8-8	276	34.5	48-100	.480	17-45	.378	27-32	.844	1	18	19	2.4	18	0	13	16	4	13	140	17.5
15	ARTIS, Dominic	9-9	325	36.1	46-111	.414	10-37	.270	31-51	.608	7	50	57	6.3	26	1	76	35	0	24	133	14.8
41	WILLMS, Matt	9-8	219	24.3	39-64	.609	0-0	.000	17-32	.531	14	33	47	5.2	22	0	8	14	12	1	95	10.6
12	WINN, Terry	3-2	68	22.7	13-25	.520	0-0	.000	3-3	1.000	3	14	17	5.7	10	1	2	6	1	0	29	9.7
23	BARRETT, Deon	9-2	171	19.0	22-46	.478	16-32	.500	5-6	.833	2	6	8	0.9	6	0	17	8	0	2	65	7.2
11	FLAGGERT, Jake	9-7	241	26.8	18-43	.419	16-38	.421	9-9	1.000	6	17	23	2.6	34	4	10	10	5	4	61	6.8
21	TOUCHET, Trey	9-1	131	14.6	12-31	.387	8-24	.333	7-8	.875	2	9	11	1.2	7	0	10	13	0	5	39	4.3
54	JONES, Kelvin	9-2	125	13.9	17-33	.515	0-0	.000	3-11	.273	16	17	33	3.7	32	4	3	11	11	0	37	4.1
22	THOMAS, Paul	9-6	166	18.4	13-34	.382	0-1	.000	6-13	.462	13	31	44	4.9	25	1	14	14	1	4	32	3.6
03	CAMERON, Tim	4-0	13	3.3	3-6	.500	1-2	.500	2-3	.667	2	2	4	1.0	2	0	0	1	0	0	9	2.3
05	BARNES, Chris	7-0	35	5.0	3-8	.375	0-2	.000	0-1	.000	1	3	4	0.6	4	0	1	3	0	1	6	0.9
13	VENEGAS, Ivan	6-0	17	2.8	2-5	.400	0-0	.000	0-0	.000	1	2	3	0.5	1	0	0	2	0	0	4	0.7
24	URBANUS, Hudson	3-0	10	3.3	0-4	.000	0-3	.000	0-0	.000	0	1	1	0.3	1	0	1	0	0	0	0	0.0
04	MOORE, Adrian	1-0	1	1.0	0-0	.000	0-0	.000	0-0	.000	0	0	0	0.0	0	0	0	0	0	0	0	0.0
20	MARTINEZ, Jose	3-0	2	0.7	0-1	.000	0-0	.000	0-0	.000	1	0	1	0.3	1	0	0	0	1	0	0	0.0
Team											7	17	24				2					
Total.....		9	1800		236-511	.462	68-184	.370	110-169	.651	76	220	296	32.9	189	11	155	135	35	54	650	72.2
Opponents.....		9	1800		237-493	.481	75-180	.417	128-198	.646	79	237	316	35.1	171	-	135	134	18	58	677	75.2

TEAM STATISTICS

	UTEP	OPP
SCORING	650	677
Points per game	72.2	75.2
Scoring margin	-3.0	-
FIELD GOALS-ATT	236-511	237-493
Field goal pct	.462	.481
3 POINT FG-ATT	68-184	75-180
3-point FG pct	.370	.417
3-pt FG made per game	7.6	8.3
FREE THROWS-ATT	110-169	128-198
Free throw pct	.651	.646
F-Throws made per game	12.2	14.2
REBOUNDS	296	316
Rebounds per game	32.9	35.1
Rebounding margin	-2.2	-
ASSISTS	155	135
Assists per game	17.2	15.0
TURNOVERS	135	134
Turnovers per game	15.0	14.9
Turnover margin	-0.1	-
Assist/turnover ratio	1.1	1.0
STEALS	54	58
Steals per game	6.0	6.4
BLOCKS	35	18
Blocks per game	3.9	2.0
ATTENDANCE	31053	20076
Home games-Avg/Game	5-6211	1-11838
Neutral site-Avg/Game	-	3-2746

Date	Opponent		Score	Att.
11/12/16	LOUISIANA COLLEGE	W	88-54	6295
@ 11/17/16	vs Wake Forest	L	81-103	2925
@ 11/18/16	vs Western Michigan	W	85-75	4020
@ 11/20/16	vs Mississippi State	L	54-61	1293
11/23/16	SOUTHEASTERN LOUISIANA	L	56-72	6348
12/3/16	NORTHWESTERN STATE	L	67-79	5928
12/07/16	at New Mexico	L	77-78	11838
12/13/16	NM STATE	L	68-79	6815
12/17/16	NORTHERN ARIZONA	L	74-76	5667

* = Conference game
 @ = Gildan Charleston Classic

Score by Periods	1st	2nd	Totals
UTEP	313	337	650
Opponents	360	317	677